

HEALTH POLICY HIGHLIGHTS

THE NEWSLETTER OF THE GW SPHHS
DEPARTMENT OF HEALTH POLICY

November & December
2009

INSIDE THIS ISSUE:

*Geiger Gibson
Distinguished Visitor*

2

*Spotlight on Health
Policy In the News*

3

*Volunteer Opportuni-
ties & Upcoming
Conferences*

4

*Spotlight on Health
Reform*

5

DHP Calendar

6

*Health Policy in the
News*

7

*Student Opportunities
& Alumni News*

8

*Calendar Resources
for Health Policy*

9

HPSA

9

A MESSAGE FROM DHP CHAIR, SARA ROSENBAUM, JD

"Happy mid-semester! By now everyone has settled in and is immersed in reading and class preparations. Even so, make time to watch and read about the historic health reform debate that has enveloped the city and the nation.

We look forward to seeing you at the Department's upcoming events, including a noontime Chair's seminar on November 23, the Edward Brandt Memorial Lecture on Women's Health Policy on December 2, and our wonderful holiday party on December 8th."



Congratulations Professor Joel Teitelbaum!



The GW School of Public Health and Health Services (SPHHS) is pleased to announce that **Professor Joel Teitelbaum, JD, LLM, has been selected as a 2009 recipient of the George Washington University Bender Teaching Award for outstanding teaching.**

Teitelbaum, an associate professor and vice chair for academic affairs in the Department of Health Policy and managing director of the SPHHS Hirsh Health Law and Policy Program, is the first Bender Teaching Award recipient from the School of Public Health and Health Services.

"Professor Teitelbaum is a wonderful teacher and scholar. He was our school's nominee for the Pfizer Teaching Award several years ago, is widely respected here and around the country for his thoughtful approach in the classroom, and has been actively engaged in creating an undergraduate public health curriculum like no other," said Josef J. Reum, PhD, interim dean of SPHHS. "His teaching skills the classroom are an inspiration to us all. Joel teaches us all something about ourselves and our world, whether in front of the class, or sitting with us at lunch."

Bender award recipients are selected on the basis of demonstrated use of sound teaching practices, use of innovative technologies, student involvement and "intellectual excitement," a strong commitment to student learning as evidenced by availability to students outside the classroom setting, and other criteria. The faculty selection committee reviews the nominations and letters of recommendation from students and faculty, student teaching evaluations, and teaching materials.

Professor Teitelbaum is available via email at joelt@gwu.edu or at the Department of Health Policy, 2021 K St NW, Suite 800.

To submit items of interest, e-mail Miranda Crowley, Miranda.Crowley@gwumc.edu by the second Friday of the month.

Thank you to DHP Staff Becky Beauregard, Rick Mauery, and Lee Repasch for their assistance in producing this newsletter.

blog!

The Robert Wood Johnson Foundation

Blog on Health Reform!

[http://](http://rwjfblogs.typepad.com)

rwjfblogs.typepad.com

[/healthreform/](http://rwjfblogs.typepad.com/healthreform/)

DHP Alum **Brad Wright** (MS '06) has a health policy blog:

[www.healthpolicy](http://www.healthpolicyanalysis.com)

[analysis.com](http://www.healthpolicyanalysis.com)

GW Hatchet Blog

[http://](http://blogs.gwhatchet.com)

blogs.gwhatchet.com

GW's GradLife

Website

[http://](http://gradlife.gwu.edu/)

gradlife.gwu.edu/

And if you'd like to submit your contributions (or any suggestions for contributions) to the DHP newsletter, please send them to Miranda.crowley@gwumc.edu

THE GEIGER GIBSON DISTINGUISHED VISITOR: VELMA HENDERSHOTT



September and October were filled with many interesting intellectual talks and lectures around campus. On October 14, 2009-2010 Geiger Gibson Distinguished Visitor, Velma Hendershott, joined the DHP community for a lunchtime seminar. Her discussion focused on her work with InterCare Community Health Network, where she has been since 1977, and CEO since 1986.

Beginning the discussion with a short film about InterCare, Hendershott shared the history of this dedicated and ever-growing organization. During her career at InterCare, Hendershott has served in various capacities including providing services to adolescents, direct outreach services to migrant farmworkers, directing the Special Programs for the organization, administering the WIC Program and serving as Deputy Director. The most interesting fact about InterCare is that Hendershott's mother was a migrant worker who started the center as a cooperative effort among several health organizations and individuals who shared the objective of bringing comprehensive, high quality health care to those in need. Hendershott now runs the organization, and is often joined by her daughter who travels between there and Children's Health Clinics in New York. InterCare is a collaboration of three generations of dedicated women.

Hendershott has also served on many Boards, was a founding member of Michigan's owned Health Center Managed Care Plan, currently is on the Michigan Primary Care Association Board, and is Secretary of the Board for the National Center for Farmworker Health. She had the distinct honor of serving as Chair of the Board of the National Association of Community Health Centers (NACHC), served on the executive committee for eight years and continues to serve on several committees.

Hendershott has had the opportunity to testify before Congress on behalf of Health Centers, and is a true advocate, having committed her professional career to advancing health care to underserved communities.

For more information on InterCare, visit www.intercare.org.

Watch your email for more interesting lectures and discussions throughout the DHP and SPHHS community.

SAVE THE DATE!
DHP Holiday Party December 8, 3-5 pm
Circle Bistro, 1 Washington Circle

HEALTH POLICY IN THE NEWS:

ENSURING SOLUTIONS RECEIVES INTERNATIONAL EXPOSURE



In October, Dr. Tracy McPherson represented the Department and Center for Integrated Behavioral Health Policy (CIBHP) at the 6th

Conference of the International Network on Brief Interventions for Alcohol Problems (INEBRIA) – an international organization of professionals who promote screening and brief intervention across the world. The Conference, sponsored in part by the World Health Organization, was held in England. Four Poster and two Symposium Abstracts were submitted. All were accepted.

The four posters were developed by the Center's team that includes Eric Goplerud PhD (Center Director), Tracy McPherson PhD, Laura Jacobus-Kantor PhD, and Delia Olufokunbi-Sam PhD. They were supported through partnerships with Aetna Behavioral Health, Optum-United Behavioral Health, and the National Business Coalition on Health (NBCH) eValue8 Initiative. The poster topics were as follows:

- ◆ Evaluation of a Telephonic Alcohol Screening & Brief Intervention (SBI) Pilot Program for At-Risk Drinking in an Employee Assistance Program (EAP) (Optum-UBH),
- ◆ Evaluation of Telephonic Alcohol Screening and Brief Intervention (SBI) in an Employee Assistance Program (Aetna),
- ◆ Screening and Brief Intervention for Alcohol Problems: Results from the 2009 eValue8 RFI, and
- ◆ Health Plan Policies for Screening and Treatment of Alcohol Problems: Results from the 2009 eValue8 RFI.

The two Symposium panel presentations summarized research conducted by Dr. McPherson and Dr. Goplerud, which was supported in part by the National Highway Traffic Safety Administration (NHTSA), Pew Charitable Trusts, and Aetna Behavioral Health. The topic was Translating Medical SBIRT into Behavioral Healthcare Practice in Work-related Settings.

One large difference that Dr. McPherson notes about the success of the Center's work is that it connects health services research to practice in workplace settings – underutilized venues for reaching people with alcohol prevention messages and early intervention strategies. Because of the unique nature of the work, the presentations were selected from those at the conference for inclusion in a special issue of Drug & Alcohol Review.

Following the INEBRIA Conference in England, Dr. McPherson traveled to the Employee Assistance Professionals Association (EAPA) Annual Conference in Dallas. This conference included a panel presentation on the process of adapting and integrating evidence-based alcohol screening, brief intervention, and referral treatment (SBIRT) as part of routine behavioral healthcare services offered by Aetna EAP.

At EAPA, Dr. McPherson also co-hosted a dinner meeting with Dr. Goplerud which served as the inaugural meeting of the Brief Intervention Group (BIG). The BIG Initiative is sponsored under a cooperative agreement with NHTSA and Center for Substance Abuse Treatment (CSAT) as part of the Center's "Screening and Brief Intervention in the Workplace Project". The BIG is

comprised of a diverse panel of advisors and experts from all parts of the SBIRT supply chain – vendors of EAP, behavioral health, wellness and occupational health; employers; business groups and associations; consultants of behavioral health, human resources, and productivity management; researchers and federal agency representatives. A member of the Obama/Biden Administration, Dr. Tom McLellan, Deputy Director of the White House Office of National Drug Control Policy (ONDCP) and representatives from SAMHSA and Department of Labor participated in the BIG event. The use of SBIRT is a priority of President Obama's agenda on prevention and treatment of alcohol use problems.

An applied research psychologist, Dr. McPherson has been involved with workplace behavioral health and chronic disease prevention since the mid-1990s. She joined the SPHHS faculty in 2006 to help build Ensuring Solutions to Alcohol Problems (now CIBHP). CIBHP is dedicated to changing the way people with substance use and mental health disorders get the help they need. For too long behavioral health care has been separated from general medical care. This division between the mind and the body is a historical anomaly that contributes to stigma, discrimination, and poor care. By creating policy solutions that bring behavioral health and physical health back together, the Center works to help create a healthier America.

For more information on the presentations, abstracts or project, Dr. McPherson is available via email at tracym@gwu.edu or at the Department of Health Policy, 2121 K St NW, Suite 210, 202-994-4307.



Alice S. Hersh Student Scholarship

AcademyHealth is pleased to announce a new scholarship program, The Alice S. Hersh Student Scholarship, which provides two free registrations to the National Health Policy Conference (NHPC) and four free registrations to the Annual Research Meeting (ARM). The scholarship is designed to encourage professional and educational development in health services research and policy among student members.

This scholarship commemorates the dedication of Alice S. Hersh, the founding executive director of the Association for Health Services Research (AHSR), to supporting the next generation of health services researchers.

Applicants must be current student members of AcademyHealth and must be enrolled in a masters or doctoral program at the time of application.

Go to:
www.academyhealth.org/Training/content.cfm?ItemNumber=2064&navItemNumber=2341
for more information.

HEALTH AND MEDICAL VOLUNTEER OPPORTUNITIES

Health Advocacy Program
GW Health Insurance Counseling Project
2136 Pennsylvania Ave., NW,
Washington, DC 20037

The Health Advocacy Program was established to help educate the community about programs in the District of Columbia that help pay for Medicare health and prescription drug costs. Volunteers assist with outreach to raise awareness of the Medicare Savings Program and assist with applications. Counselors screen clients for benefit eligibility, assist Medicare beneficiaries with enrollment and advocate for participants throughout the process. Health Advocacy counselors may also respond to hotline calls to find solutions for problems people encounter with their Medicare and Medicaid coverage.

Contact: Chris DeYoung (202) 739-0668

Reach Out and Read Volunteer
Unity Health Care, Inc.
3020 14th Street, NW,
Washington, DC 20009

Unity Health Care is a non-profit agency offering a continuum of medical care and human services primarily to homeless and medically underserved people in Washington, D.C. Regardless of ethnic background, race, creed, color or ability to pay, Unity provides compassionate, quality, cost-efficient care through services of a skilled, compassionate, multi-cultural staff.

Unity Health Care is seeking volunteers for the Reach Out and Read Program at many of Unity Health Care Inc.'s sites. Volunteers participate in the following: reading to children, distributing used books to children, modeling reading skills to parents and children.

Contact: Anyelina Hernandez (202) 715 - 7905 or ahernandez@unityhealthcare.org

Website: <http://unityhealthcare.org>

For a comprehensive listing of a diverse array of volunteer opportunities in the Metro DC area, please visit:
www.volunteermatch.org

UPCOMING CONFERENCES



American Public Health Association

137th Annual Meeting & Exposition

November 7-11, 2009
Philadelphia, PA

The APHA Annual Meeting & Exposition is the oldest and largest gathering of public health professionals in the world, attracting more than 13,000 national and international physicians, administrators, nurses, educators, researchers, epidemiologists, and related health specialists. APHA's meeting program addresses current and emerging health science, policy, and practice issues in an effort to prevent disease and promote health.

Visit <http://www.apha.org/meetings/> for details and more information.



GH/Innovate 2010

Global Health & Innovation Conference
April 17-18, 2010
Washington, DC

200 speakers including keynote addresses by Seth Godin, Jacqueline Novogratz, Jeffrey Sachs and Sonia Sachs. Social innovation sessions by CEOs and Directors of Acumen Fund, Partners in Health, WaterPartners, Save The Children, HealthStore Foundation, and many others. The Global Health & Innovation Conference convenes more than 2,200 students and professionals from 55 countries who are interested in global health and international development, public health, medicine, social entrepreneurship, nonprofits, philanthropy, microfinance, human rights, anthropology, health policy, advocacy, public service, environmental health, and education.

Conference information and updates are on APHA's conference web site at <http://www.aphsa.org/Conference/calendar.asp>

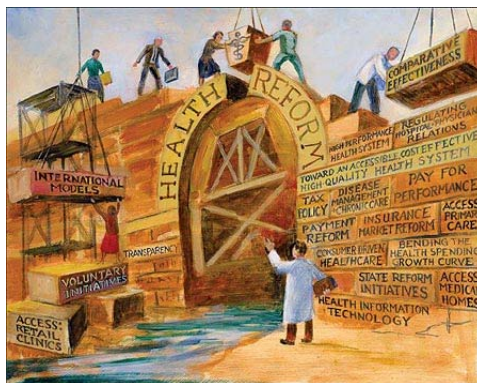
SPOTLIGHT ON NATIONAL HEALTH REFORM

New Analyses of Senate HELP and Finance Committee Health Reform Proposals Address Significant Legal Changes

New analyses of the Senate HELP and Finance Committees' Health Reform proposals examine significant legal changes to the financing and delivery of health care included in these measures. The analyses are part of an ongoing project of the George Washington University Hirsh Health Law and Policy Program, within the School of Public Health and Health Services (SPHHS), to advance public understanding of the legal dimensions of national health reform.

Building on the comparative analyses of previous health reform proposals, the analysis of the Senate HELP Committee's Affordable Health Choices Act (S. 1679) focuses on legal changes to the structure of the individual and group insurance markets and related coverage provisions. For the Chairman's Mark of the America's Healthy Future Act of 2009 (S. 1796), the analysis includes a comprehensive examination of the key legal changes that impact not only coverage, but the ways in which health care is organized and delivered.

"This analysis reflects the enormous progress toward health reform that has been made over the past weeks. With the merger of these two bills, the House and Senate are poised to launch a historic national policy debate," said Sara Rosenbaum, Hirsh Professor of Health Law and Policy and Chair of the Department of Health Policy. Professor Jane Hyatt Thorpe, who directs the comparative analysis project for the Hirsh Program, added, "These analyses examine the critical legal issues that will largely define the debate, and are designed to help policy makers, health professionals, and consumers understand their scope and meaning."



The comparative analyses use a special health reform legal taxonomy developed by GW Hirsh Program faculty and staff. The taxonomy is an analytic tool that provides a uniform and consistent mechanism for understanding in detail the key elements of health reform, including access, coverage, affordability, quality, health, financing, and the organization of health care markets, across the various proposals. The taxonomy is used to generate an analytic and comparative analysis of the various proposals that can be viewed independently or comparatively (side by side) in a user-friendly format to provide a consistent and comparative understanding of each legislative proposal.

In addition to the Senate HELP Committee's Affordable Health Choices Act and the Senate Finance Chairman's Mark of the America's Healthy Future Act of 2009, the taxonomy has been used to analyze the House Tri-Committee Bill, The America's Affordable Health Choices Act (H.R. 3200); the Healthy Americans Act (S. 391); the Patient's Choice Act (S. 1099); and the American Health Security Act of 2009 (S. 703). Future additions will include legislative proposals as they emerge from the Senate and Congress.

The comparative analysis and interactive tool is available on the Department of Health Policy's Web site at www.gwumc.edu/sphhs/departments/healthpolicy/healthreform/

SOCIETY OF HEALTH POLICY YOUNG PROFESSIONALS

The Society of Health Policy Young Professionals was founded in May 2006 on behalf of DC-area young professionals working or interested in the health, health care, and health policy fields. The Society is an innovative organization created to foster new relationships among young professionals, to provide a forum for networking and socializing, as well as to organize professional development and skill-building events.

For information about upcoming Society events, please visit the website and event calendar of the Society for Health Policy Young Professionals at <http://dchealthpolicy.org>.

Your Student Representatives on the DHP Student Affairs Committee

Do you have an idea for a DHP event? Suggestions you would like to offer the DHP to improve your experience as a student in the Department?

Please contact the following individuals who serve on the DHP Student Affairs Committee:

MPH: Emma Sandoe
esandoe@gwmail.gwu.edu

DrPH: Saqi Maleque
saqi@gwu.edu

PhD: Emily Jones
emilybjones@gmail.com

DHP NOVEMBER CALENDAR

November 2009

- ◆ For YOUR Health lectures will be held ever Friday from 12-1pm in Ross Hall 237.
- ◆ HPSA Meeting on 11/11 at 8 pm. Details to follow.
- ◆ Funding Your Dissertation Research is a seminar hosted by SPHHS on 11/12 in Marvin 101.
- ◆ The DHP Chair is hosting her lunch-time seminar on 11/23 at noon.

Visit <http://www.gwumc.edu/sphhs/events/index.cfm> for more details and events!



And watch your e-mail for late-breaking events and any changes to our calendar!

SUN	MON	TUE	WED	THU	FRI	SAT
1	2	3	4	5	6 Health Lecture	7
8	9	10	11 HPSA Meeting Veterans' Day	12 Funding Dissertation	13 Health Lecture	14
15	16	17	18	19	20 Health Lecture	21
22	23 DHP Chair's Seminar	24	25	26 Thanks-giving	27 No Classes	28
29	30					

December 2009

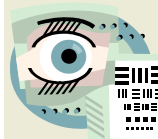
DHP DECEMBER CALENDAR

SUN	MON	TUE	WED	THU	FRI	SAT
		1	2 Womens Health Policy Lecture	3	4 Health Lecture	5
6	7	8 DHP Holiday Party	9 Reading Days	10	11 Exams	12 Hanukkah
13	14	15	16	17	18	19
		Final Examinations				
20	21	22	23	24	25 Christmas	26
27	28	29	30	31 New Years Eve		

- ◆ Edward Brandt Memorial Lecture on Women's Health Policy will be on 12/2. Details to follow.
- ◆ DHP is hosting the Annual Holiday Party, on 12/8 from 3-5 PM Circle Bistro, 1 Washington Circle

Visit <http://www.gwumc.edu/sphhs/events/index.cfm> for more details and events!

Suggest an event! E-mail Lee Repasch at Lee.Repasch@gwumc.edu if you have an idea for a brown-bag lunch, seminar, or other health policy gathering.



Watch your e-mail for late-breaking events and any changes to our calendar!

HEALTH POLICY IN THE NEWS

Health Policy faculty and staff published innumerable articles and papers over the past two months. Faculty and Staff also received several awards and grants! In addition to those mentioned below, check your email for updates on Health Policy in the News!

- ◆ **Professor Avi Dor**, Ph.D., was selected by the American Society of Health Economics (ASHE), office of the President, to edit the next volume of *Advances of Health Economics and Health Services Research*, a prestigious book series.
- ◆ **Leighton Ku**, Ph.D., professor, was interviewed by NPR on illegal immigrants & health insurance under healthcare reform. Bloomberg News also quoted Professor Ku in a recent article on health care and illegal immigrants. Professor Ku also spoke at the National Council of La Raza's symposium.
- ◆ The *Buffalo News* ran a story focusing on **Bruce Siegel**, M.D., M.P.H., and his commitment to reducing ethnic and racial disparities in health care through his work.
- ◆ **Jason Rao**, Ph.D., professorial lecturer, has been detailed from his position at the Department of State to become the Senior Advisor on Global Health Security, Science and Technology Cooperation in the International Affairs and National Security Division of OSTP in the Executive Office of the President.
- ◆ **Susan Wood**, Ph.D., associate professor, was quoted in a recent arti-

cle on the complicated history of "Plan B" in *Newsweek* magazine.

- ◆ **Sara Rosenbaum**, J.D., chair & Hirsh Professor of Health Law and Policy, was quoted in an August 20th article in the *NY Times* titled "A Basis Is Seen for Some Health Plan Fears Among the Elderly."
- ◆ The *NY Times* reviewed "Technological Medicine," a collection of essays on medical technology by **Stanley Joel Reiser**, M.D., M.P.A., Ph.D., clinical professor.
- ◆ Department of Health Policy Senior Fellow **Margaret Dunkle** has been appointed Co-Chair of the Committee on Early Identification and Treatment of the North Los Angeles County Autism Regional Task Force.
- ◆ **David Stevens**, M.D., F.A.A.F.M., research professor and Director of Quality, NACHC, addressed the October 20th Cabot Primary Care Lecture Series on "Community Health Centers: America's Health Care Home."

Congratulations to the following DHP Faculty and Staff who received Grants & Awards:

- ◆ Susan Wood, Ph.D.
- ◆ Melissa Goldstein, J.D.
- ◆ Leighton Ku, Ph.D.
- ◆ Rick Mauery, MPH
- ◆ Peter Shin, Ph.D., M.P.H.
- ◆ Anne Markus, Ph.D., J.D.

Recently receive a grant, publish a paper, speak at a conference, attend an event or simply have something exciting to share with the DHP Community?

Send an email to Miranda.crowley@gwumc.edu with details and we'll be sure to include

it in the next issue!

Scholarship Opportunity!

The CSIS Commission on Smart Global Health is seeking essay submissions that answer the following question in 500-800 words by midnight, November 20th 2009:

"What is the most important thing the U.S. can do to improve global health over the next 15 years?"

We are looking for fresh, innovative approaches to global health problems. The author of the winning essay will receive a \$1,000 scholarship with a chance to be published in the Commission's final report. Complete details can be found at: www.smartglobalhealth.org/pages/essay-signup

Looking for something to do?

Whether new or old to DC, these websites will provide you with lots of things to do!

- ◆ **GW Today** at <http://www.gwu.edu/explore/gwtoday/events>
- ◆ **100 Free Things to Do in Washington** at <http://www.washington.org/visiting/browse-dc/attractions/100-free-things-to-do>
- ◆ **What's on Washington** at <http://whatsoncity.net>





**NCHS/AcademyHealth Health Policy Fellowship
Call for Applications due January 4, 2010**

The Centers for Disease Control (CDC) and Prevention's National Center for Health Statistics (NCHS) and AcademyHealth are seeking applications for their 2010 Health Policy Fellowship.

FELLOWSHIP GOALS

The aim of the fellowship is to foster collaboration between NCHS staff and visiting scholars. The fellowship allows scholars to conduct new and innovative analyses and participate in developmental and health policy activities related to the design and content of future NCHS surveys and offers access to the data resources provided by the CDC.

WHO SHOULD APPLY

Applicants may be at any stage in their careers—from doctoral students to senior investigators. Doctoral students must have completed course work and be at the dissertation phase of their program.

REQUIRED TRAINING

Applicants must demonstrate training and/or experience in health services research and methodology, reflecting disciplines such as:

- ◆ Public Health
- ◆ Economics
- ◆ Health Care Administration
- ◆ Public Administration
- ◆ Sociology
- ◆ Behavioral Sciences

LOCATION AND COMPENSATION

The entirety of the fellowship must be completed at the NCHS headquarters in Hyattsville, Md. Fellows receive a salary commensurate with qualifications and experience. For details, view the FAQ page of the fellowship Web site.

To learn more about the fellowship, review application requirements, or view past fellows' profiles, visit the AcademyHealth Web site:
<http://www.academyhealth.org/Training/content.cfm?ItemNumber=1441&navItemNumber=2332>

DHP Website

Special Thanks to **Michael Sandstrom** for his hard work to redesign the DHP Website! The site now has more resources and links than ever before, including research and publications done by our own DHP Faculty and Staff! To access the website, go to www.gwhealthpolicy.org

Michael is available via email at Michael.sandstrom@gwumc.edu

News from Alumni

Are you an Alum with news you'd like to share?
We'd love to hear from you!
Please send an e-mail to Lee Repasch
lrepasch@gwumc.edu

The Geiger Gibson Program in Community Health Policy

is a special initiative of The George Washington University School of Public Health and Health Services. This program was established in 2004 to honor Drs. H. Jack Geiger and Count Gibson, pioneers in community health practice and tireless advocates for civil and human rights.

<http://www.gwumc.edu/sphhs/healthpolicy/ggprogram/>

Online Jobs Lists

GW and the SPHHS maintain online job lists as a way to connect students with job opportunities throughout the world of Health Policy (and elsewhere). You may search by key words and view the jobs by job category, as well as all at once:

- Full-Time jobs
- Part-Time jobs
- Internships
- Fellowships

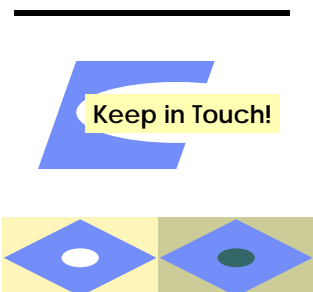
For more information, visit:
<http://gwired.gwu.edu/career/>
and
<http://www.gwumc.edu/sphhs/studentres/careers/jobs/>

**GW SPHHS
Department of Health
Policy**

2021 K Street NW
Suite 800
Washington, DC 20006

Phone: 202-296-6922
Fax: 202-296-0025

www.gwhealthpolicy.org



*We're in touch, so
you be in touch!*

Please keep the
DHP informed of
your most current
contact informa-
tion.

If your mailing ad-
dress, telephone,
or e-mail address
changes, please
send an e-mail to:

Professor
Kristin Younger
[Kyounger
@gwu.edu](mailto:Kyounger@gwu.edu)

The Department of Health Policy is the home for health policy studies and research at The George Washington University and its School of Public Health and Health Services. The Department focuses on virtually all phases of U.S. health policy -- both public health and health services -- and emphasizes preparing students to understand and analyze health policy matters in a broad, cross-cutting, and real-world context. Among Schools of Public Health, the SPHHS Department of Health Policy is unique; it has been created to take maximum advantage of our location in Washington D.C., the nation's health policy-making epicenter. The Department offers lectures and symposia on emerging issues in health policy throughout the academic year for students, graduates, and DC's health policy community. The Department's courses are taught by both core faculty, as well as faculty drawn from Washington D.C.'s health policy leadership. The curriculum is structured to train students in the methods and tools of health policy analysis, including qualitative and quantitative analysis techniques, legal analysis, economic analysis, and the preparation and presentation of research results and policy options to health policy makers.

Suggestions?
*Do you have a suggestion for a DHP activity
or for newsletter content?*
We'd love to hear from you!
Please send an e-mail to Miranda Crowley
Miranda.Crowley@gwumc.edu

Valuable Calendar Resources for Health Policy Events

The Henry J. Kaiser Family Foundation's **Kaisernetwork.org** provides a searchable list of events in health policy, HIV/AIDS, women's health policy, global health and health disparities. It also offers complete listings for HealthCasts -- live and archived online video coverage of key meetings, conferences and other health policy events in Washington, D.C. and across the globe. Users can choose to view all events or select from various topics such as:

- HIV/AIDS
- Women's Health Policy
- Health Policy
- HealthCast
- Global Health
- Health Disparities

Calendars can be viewed for specific days, weeks, or months.

This is a particularly rich resource for those looking for opportunities to fulfill professional enhancement requirements for a degree, or for obtaining an insider's view on a topic that you are writing about.

Visit:
<http://www.kaisernetwork.org/calendar/calendar.cfm>

Hearings on the Hill

The schedules of House and Senate hearings and committee meetings is maintained at <http://thomas.loc.gov/home/schedules.html>. Here you can view congressional floor schedules:

- House Floor This Week
- House Committee Hearing Schedule
- Senate Committee Hearing Schedule
- Senate Floor Schedule
- Senate Majority Schedule
- Senate Minority Schedule
- Days-in-Session Calendars
- Senate Executive Calendar
- Current and Previous House and Senate Calendars
- Current and Previous Senate Calendars

GW Health Policy Student Association!

Greeting Health Policy Students!

Many of you are buried under the books and fully immersed into the semester! This fall semester has been busy and exciting for everyone! It has been great to meet so many of the new students and have their involvement and input for the Health Policy Student Association.

We are happy to announce that three new members have been elected as “members at large.” Elections were held at the beginning of October and the following students were elected:

- Dena Olyaie
- Trevor Simon
- Roma Sharma

Congratulations on your election into the GW Health Policy Student Association!

With only a few weeks left in the semester, we have been busy planning many more events for the fall semester.

Our officers have been working out the details for a yummy fundraiser event and community service event. Watch your inbox for additional information. You will not want to miss these events! We also had a great turnout at our first HPSA open meeting. The next meeting is scheduled for November 11th at 8 pm EST. Additional information and confirmation of time, date and location will be emailed soon!

Thank you to all students and staff that have shown great support for HPSA! We are always eager to hear your suggestions and comments on how to make your association better!

For more information about HPSA or to share your ideas for new HPSA events, please contact Emma Sandoe at esandow@gwmail.gwu.edu.



For more information about HPSA or to share your ideas for new HPSA events, please contact Emma Sandoe at esandoe@gwmail.gwu.edu.