

HEALTH POLICY HIGHLIGHTS

THE MONTHLY NEWSLETTER OF THE GW SPHHS
DEPARTMENT OF HEALTH POLICY

April 24

INSIDE THIS ISSUE:

*A Tribute to
Dr. Harold Hirsh* 2

*Volunteer Opportuni-
ties & Upcoming
Conferences* 3

*Health Policy in the
News* 4

*Spotlight on Health
Reform* 4

DHP Calendar 5

Beyond Health Care 6

*Student & Alumni
News* 7

*Calendar Resources
for Health Policy* 8

HPSA 9

A MESSAGE FROM DHP CHAIR, SARA ROSENBAUM, JD

As this highly eventful academic year comes to a close, it is evident that where health policy is concerned, this time period is shaping up like seldom in the past. There will be an enormous amount to ponder over the summer. For those of you returning for the new academic year, we hope to make it both lively and stimulating, with significant classroom activities and times for informal discussion and guest drop-bys. For those of you who will be graduating, we welcome you back with open arms as alums. Please let us know where you will be and stay engaged, whether through attendance at events or auditing that course that you never got to take last year!



Congratulations to the
Department of Health
Policy Class of 2009!



Best wishes as you
continue on your
journey of life!

On March 25th,
Dr. Harold Hirsh, a dear
friend of the Department of
Health Policy, passed away
from congestive heart failure.

Turn to page 2 to read about
the life of Dr. Hirsh.

He will be missed by all.

To submit items of
interest, e-mail Miranda
Crowley,
Miranda.Crowley
@gwumc.edu by the first
Friday of the month.

Thank you to DHP Staff
Becky Beauregard,
Rick Mauery, and Lee
Repasch and DHP Stu-
dent Wendy Korrick for
their assistance in pro-
ducing this newsletter.



On March 25th, President Barack Obama
announced his intent to nominate DHP's own,
Phyllis C. Borzi, Assistant Secretary of Labor
for Employee Benefits Security in the
Department of Labor!

"At a time when our nation faces many challenges, it gives
me confidence that these fine individuals have agreed to give
their talents to serving the American people. They will be a
valuable addition to my administration, and I look forward to
working with them in the coming months."

-President Barack Obama

Congratulations and Best of Luck
Professor Borzi!

Blog News

The Robert Wood Johnson Foundation has begun a blog on Health Reform!

One of the first contributions comes from our very own **Sara Rosenbaum**.

Bookmark, visit and contribute to the discussion!

[http://
rwjfblogs.typepad.com
/healthreform/](http://rwjfblogs.typepad.com/healthreform/)



And if you'd like to submit your contributions (or any suggestions for contributions) to the DHP newsletter, please send to Miranda.crowley@gwumc.edu

A TRIBUTE TO DR. HAROLD HIRSH

Harold L. Hirsh, 91, a physician, lawyer, professor, and dear colleague of many in The George Washington University Medical Center, died March 25th, 2009 of congestive heart failure.

Dr. Hirsh, along with his wife, Jane, was a major benefactor of the GW School of Public Health and Health Services, and he regularly instructed and participated in courses and programs within the Medical Center. Among other forms of support, Dr. and Mrs. Hirsh endowed the Hirsh Health Law and Policy Program and the Hirsh Professorship in Health Law and Policy at SPHHS, both of which are housed in the Department of Health Policy. Dr. Hirsh also gifted an annual law and medicine grand rounds lecture in the GW School of Medicine.

Dr. Hirsh's professional career was enormously influential. A Washington native, he graduated with honors in 1942 from Georgetown University Medical School and spent the next 30 years practicing internal medicine and teaching clinical medicine at Howard University's medical and dental schools. After three decades as an infectious disease specialist, he grew weary of what he viewed as the increasing "industrialization" of medicine and entered law school at American University, from which he graduated, also with honors, in just 2½ years. He then embarked on an equally long career at the intersection of law and medicine, teaching medical ethics and medical law courses at American University, George Washington University, and other local institutions. To this day he is regarded as one of the "grandfathers" of the field of medical services law.

In addition, Dr. Hirsh published hundreds of articles in medical, legal, and scientific journals and authored or co-authored 15 books. He was the editor of several journals and served on the boards of various medico-legal organizations, and he held professorial rank at several local universities, including one as Distinguished Visiting Professor at GW.

Dr. Hirsh was a volunteer medical director of the Hebrew Home of Greater Washington for twenty years and, with Mrs. Hirsh, endowed the Hirsh Health Center, an outpatient geriatric medical center at the Hebrew Home in Rockville.

Dr. Hirsh's brilliant mind and infectious humor will be missed, but he is survived by a mountain of scholarship, thousands of students, three children, six grandchildren, four great-grandchildren, and his wonderful wife of 68 years, Jane Kirsch Hirsh.

Dept. of Health Policy Professional Mentoring Program

All current SPHHS Health Policy Students and SPPPA students with a concentration in Health Policy are invited to join our Professional Mentoring Program. This program is intended to match health policy students with professionals in the field to provide career advice, networking opportunities, research ideas, and more.

Program Goals

- To provide an opportunity for students to learn from "professional advisors" who are currently working in the health policy field;
- To create a relationship with a mentor who can assist you in making choices about research projects, pro bono opportunities, career paths, future schooling, etc. during and after your time at GW;
- To establish a network of mentors who may be available for formal roles as special projects preceptors and thesis or dissertation advisors;
- To strengthen the ties between students, mentors, and the Health Policy program.

If you are interested in learning more about the program, please review the Mentor and Student guidelines available at:

www.gwumc.edu/sphhs/healthpolicy/mentor/

HEALTH AND MEDICAL VOLUNTEER OPPORTUNITIES

Mental Health Association of Montgomery County

1000 Twinbrook Parkway
Rockville, MD 20851

The Kids on the Block educational puppet troupe program of the Mental Health Association of Montgomery County seeks volunteers to learn the art of puppetry and present on a variety of topics to elementary school children. Volunteers must possess the desire to work with children, must be 21 years of age and must commit for at least 1 year. *Mental Health Association is a private, nonprofit, United Way organization serving Montgomery County residents and concerned with mental health and mental disorders.*

Contact: Marsha Teichman (301) 424-0656

Website: <http://www.mhamc.org>

Volunteers, Unity Health Care, Inc.

1220 12th Street, SE Suite 120
Washington, DC 20003

Unity Health Care, Inc. is seeking volunteer patient Greeters who will assist in facilitating consumer centered care for patients, which includes greeting patients, directing patients to appropriate departments in the health center and serving as the first point of contact. Hours of service: 8:15 am to 11:30 am, M, T, TH, F, and Wed 11:15 am to 2:00 pm. We are also seeking volunteers to participate in our Reach Out and Read program. The volunteers will assist in facilitating a reading corner, which includes reading to patients as they wait in the waiting rooms. Hours of service: any two hours between 8:30 am and 5:00 pm, M, T, TH, F, and Wed 11:30 am to 7:00 pm. If you are interested in giving back to your community the Reach Out and Read and the Greeter Program will be perfect for you.

Contact: Audrey White (202) 715-7977

Website: <http://www.unityhealthcare.org>

For a comprehensive listing of a diverse array of volunteer opportunities in the Metro DC area, please visit:
www.volunteermatch.org

UPCOMING CONFERENCES



AcademyHealth Advancing Research, Policy and Practice

Annual Research Meeting

June 28-30, 2009
Chicago, IL

For 25 years AcademyHealth's Annual Research Meeting (ARM) has brought together health services researchers, providers, and key decision makers to address the critical challenges confronting the nation's health care delivery system.

Each year, the ARM offers a rich and exciting slate of invited and peer-reviewed research sessions, methods workshops, and networking opportunities. This year, as our nation's new leaders consider health care reform options to reduce costs, improve access, and invest in quality, the ability to apply the findings of health services research to inform the decision-making process is ever more important.

If you are a researcher, policymaker, provider, health care manager, or student, attend this meeting to:

- ◆ Examine emerging research issues critical to the organization, financing, and management of health services;
- ◆ Get updates on the latest research studies and current health policy issues;
- ◆ Hone skills in research methods;
- ◆ Learn about research funding priorities of foundations and federal agencies;
- ◆ Explore the impact of health services research on improving access to and quality of care;
- ◆ Connect with colleagues and leaders in the fields of health services research and health policy;
- ◆ Examine more than 800 posters presenting the latest research findings; and
- ◆ Visit exhibitors targeted to the health services research and health policy fields.

Visit www.academyhealth.org/arm for details and more information.

HEALTH POLICY IN THE NEWS

Department of Health Policy Professor Dr. Fitzhugh Mullan Testifies Before Congress

In March, Dr. Fitzhugh Mullan testified on present and future American health care workforce needs before the Subcommittee on Health of the House Energy and Commerce Committee and the Senate Finance Committee.

Dr. Mullan is the Murdock Head Professor of Medicine and Health Policy. His health care workforce policy experience includes the intense study of workforce issues, experience as a working pediatrician and direction of workforce programs such as the National Health Service Corps while serving as a member of the U.S. Public Health Service Commissioned Corps. Most recently his workforce research has expanded to the study of medical education in Sub-Saharan Africa through a grant from the Bill & Melinda

Gates Foundation.

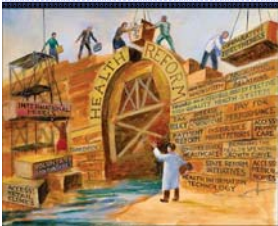
Professor Mullan's testimony before the House focused on the relationship between the health care workforce and increased access to care. Testimony in the Senate presented workforce issues in the context of national health reform. Both testimonies emphasized the urgent need to move forward with modifications in the structure of the U.S. physician workforce, the foremost of which will be the construction of a strong primary care delivery base. The important role of nurse practitioners and physician assistants in both the generalist and specialty sectors also was stressed.

Dr. Mullan's testimonies are available in their entirety at:

<http://energycommerce.house.gov/>

<http://finance.senate.gov/sitepages/hearing031209.htm>

SPOTLIGHT ON NATIONAL HEALTH REFORM



On April 20th Senators Max Baucus, Chairman of the Finance Committee and Edward M. Kennedy, Chairman of the Committee

on Health, Education, Labor and Pensions, informed President Obama that each of their Committees would vote on national health reform legislation in early June paving the way for consideration of a merged bill by the Senate this summer.

In the House, Representatives Charles B. Rangel, Chairman of the Ways and Means Committee, Henry A. Waxman, Chairman of the Energy and Commerce Committee, and George Miller, Chairman of the Education and Labor Committee continue to work with their Committees on the development of a comprehensive national health reform bill.

Since the beginning of the year the five Senate and House Committees have been conducting hearings and roundtables on a variety of national health reform related issues including quality, long-term care, delivery system reform, budget op-

tions, workforce, insurance market reform, health promotion and prevention, health information technology, best patient care practices, the underinsured, individual state health coverage initiatives and employer-based coverage.

Sara Rosenbaum, JD, our Department Chair and Hirsh Professor of Health Law and Policy, has been selected to participate in a May 5th Senate Finance Committee roundtable discussion on expanding health care coverage. More information on the Committee's health care reform roundtable will soon be available at: <http://finance.senate.gov/sitepages/hearings.htm>

President Obama's fiscal year 2010 budget assumes rapid enactment of health reform legislation this year as reflected by his budget proposal to set aside more than \$600 billion for health care over the next decade. Although the White House has not publicly offered details for a health reform bill, it will be offering technical assistance to Congress on request through the recently established White House Office of Health Reform headed by Nancy-Ann DeParle.

SOCIETY OF HEALTH POLICY YOUNG PROFESSIONALS

The Society of Health Policy Young Professionals was founded in May 2006 on behalf of DC-area young professionals working or interested in the health, health care, and health policy fields. The Society is an innovative organization created to foster new relationships among young professionals, to provide a forum for networking and socializing, as well as to organize professional development and skill-building events.

For information about upcoming Society events, please visit the website and event calendar of the Society for Health Policy Young Professionals at <http://dhealthpolicy.org>.

Your Student Representatives on the DHP Student Affairs Committee

Do you have an idea for a DHP event? Suggestions you would like to offer the DHP to improve your experience as a student in the Department?

Please contact the following individuals who serve on the DHP Student Affairs Committee:

MPH: Stephanie David
Stephanie.David@gwumc.edu

DrPH: Saqi Maleque
saqi@gwu.edu

PhD: Emily Jones
emilybjones@gmail.com

DHP APRIL CALENDAR

April 2009

Events are at DHP, 2021 K Street, NW, Suite 800 unless otherwise indicated

- ◆ Public Health Grand Rounds (Dr. Karen Davis on Thursday, April 9th at 9am at GW Hospital Auditorium)
- ◆ 2009 George A. Silver Lecture (Cindy Mann, J.D., "Health Reform as Matter of Social Justice" on Tuesday, April 14th at noon at GW Hospital Basement Auditorium)
- ◆ DHP End of Year Party (Wednesday, April 22nd 3-5pm at Circle Bistro. RSVP to evite@gwu.edu)
- ◆ 24th Annual Excellence Awards Ceremony (Wednesday, April 22nd at 7pm at Lisner Auditorium)

SUN	MON	TUE	WED	THU	FRI	SAT
			1	2	3	4
5	6	7	8	9 Grand Rounds	10	11
National Public Health Week— www.nphw.org						
12	13	14 Annual Silver Lecture	15	16	17	18
NPHW						
19	20	21	22 DHP End of Year Party Excellence Awards Ceremony	23	24	25
26	27	28	29	30		



Watch your e-mail for late-breaking events and any changes to our calendar!

May 2009

DHP MAY CALENDAR

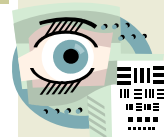
Events are at DHP, 2021 K Street, NW, Suite 800 unless otherwise indicated

- ◆ GW Commencement Weekend (May 16-17, 2009, visit <http://www.gwumc.edu/sphhs/studentres/Graduation/> for more details.

Visit <http://www.gwumc.edu/sphhs/events/index.cfm> for more details and events!

Suggest an event! E-mail Lee Repasch at Lee.Repasch@gwumc.edu if you have an idea for a brown-bag lunch, seminar, or other health policy gathering.

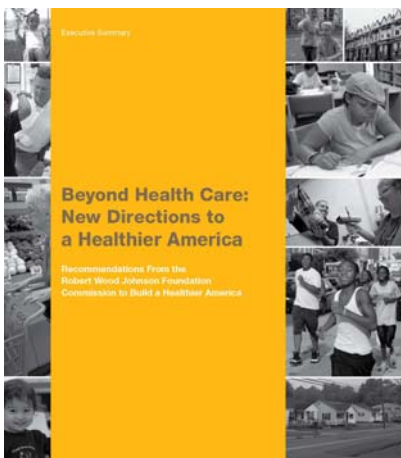
SUN	MON	TUE	WED	THU	FRI	SAT
					1	2
3	4	5	6	7	8	9
GW Final Exams						
10	11	12	13	14	15	16 SPHHS Commencement
GW Final Exams						
17 GW Commencement	18	19	20	21	22	23
24	25	26	27	28	29	30
31						



Watch your e-mail for late-breaking events and any changes to our calendar!

BEYOND HEALTH CARE: NEW DIRECTIONS TO A HEALTHIER AMERICA

A new report released on April 2, by the Robert Wood Johnson’s Commission to Build a Healthier America, calls for a much broader view of America’s health, beyond the current health care reform debate’s focus on access to medical care to the health of the population at large. Associate Executive Director Wilhelmine Miller and Commission co-chairs Mark McClellan and Alice Rivlin among others, issued *Beyond Health Care*, the culmination of a year’s study of where and how people live their lives. *Beyond Health Care* asserts “health is more than healthcare” and estimates only “10 to 15 percent of preventable mortality has been attributed to medical care [or lack thereof].” The report cites “powerful social factors such as education and income and quality of



neighborhood environments” as the key to health and longevity. Particularly alarming is the likelihood children face the grim prospect of sicker and shorter lives than their parents.

Beyond Health Care issues ten recommendations addressing economic opportunity, early childhood development, schools, housing, the workplace, community design and nutrition – all toward improving the nation’s current shortfall in health and ensuring future generations. It recognizes the powerful social factors determining a person’s likelihood of becoming sick and/or dying prematurely. Assigning only “personal responsibility” for health overlooks the reality that

“in many instances, the barriers to good health exceed an individual’s abilities to overcome.” Among the key recommendations:

- ◆ Give kids a healthy start (e.g. childcare, education, etc.)
- ◆ Ban junk food from schools
- ◆ Get kids moving
- ◆ Help all families follow healthy diets
- ◆ Create public-private partnerships to open grocery stores in communities without access to healthful foods.

Limited economic means, associated chronic stress, health-damaging environments, and crime-riddled communities create serious obstacles to healthful living. *Beyond Health Care* issues an appeal for society to lend a helping hand. “Where people live, learn, work and play affects how long and how well they live—to a greater extent than most of us realize. The road to a healthier nation requires us all to understand that this is about everyone, rich and poor, minority and majority, rural and urban. We cannot improve our health as a nation if we continue to leave so many far behind.”

*For more information on the Report or the Commission, please visit
www.commissiononhealth.org*

-Wendy Korrick, DHP Student

Looking for something to do?

Whether new or old to DC, these are sure to be fun!

- ◆ Stroll up Massachusetts Avenue to get a first-hand look at the embassies from around the world. **The Embassies are free and open to the public on May 2nd—check out http://www.culturaltourismdc.org/calendar2532/calendar_show.htm?doc_id=76354**
- ◆ Experience the serenity of the monuments by taking a jog at sunrise.
- ◆ Make a power play and start a game of Frisbee on the **National Mall**, or a game of volleyball at one of the pits at **Potomac Park**.
- ◆ See the stars in **Rock Creek Park** at the only planetarium operated by the National Park Service.

For more ideas, check out <http://www.washington.org/visiting/browse-dc/attractions/100-free-things-to-do>

ACTIVE STUDENTS ON CAMPUS

GWUMC's 14th Annual Health Sciences Research Day

Wednesday, April 1, 2009

Frontiers in Mental Health:

Recent Advances and Future Directions

<http://www.gwumc.edu/research/researchday.html>



Health Policy Career Panel

Tuesday, April 7, 2009



Four distinguished GW Alumni joined DHP Students for a discussion of their career choices following completion of their degrees at GW: Jennifer Boyer, MPH, of WellPoint, Inc., Emily Gibbons, MPP, of the Office of Congressman Eliot Engel, Craig Kennedy, MPH, of



the National Association of Community Health Centers, and JoAnn Martinez-Shriver, JD MPH, of the US Government Accountability Office. Following the panel, they enjoyed cocktails and conversation with current DHP students at the Circle Bistro Lounge.

The Geiger Gibson Program in Community Health Policy

is a special initiative of The George Washington University School of Public Health and Health Services. This program was established in 2004 to honor Drs. H. Jack Geiger and Count Gibson, pioneers in community health practice and tireless advocates for civil and human rights.

<http://www.gwumc.edu/spbbs/healthpolicy/ggprogram/>

Online Jobs Lists

GW and the SPHHS maintain online job lists as a way to connect students with job opportunities throughout the world of Health Policy (and elsewhere). You may search by key words and view the jobs by job category, as well as all at once:

- Full-Time jobs
- Part-Time jobs
- Internships
- Fellowships

For more information, visit:

<http://gwired.gwu.edu/career/>

and

<http://www.gwumc.edu/spbbs/studentres/careers/jobs/>

News from Alumni

- ◆ In February, **Dr. Beth Feldpush** successfully defended her dissertation, entitled "Hospital Quality Performance as Assessed by Ideal Care Measures."
- ◆ In March, **Dr. Tasmeen Singh Weik** successfully defended her dissertation, entitled "Measuring the Facilitators and Barriers in the Implementation of Performance Measures in Emergency Medical Services for Children."
- ◆ In April, **Dr. Chaya Merrill** successfully defended her dissertation. Her research is entitled "Should Medicare's Bariatric Surgery Coverage Policy be Extended to Obese Individuals without Pre-Existing Comorbidities?"

Are you an Alum with news you'd like to share?

We'd love to hear from you!

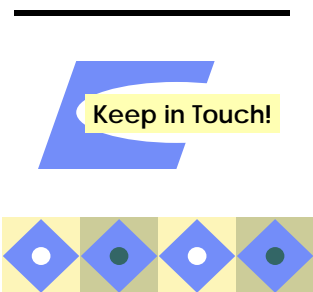
Please send an e-mail to Lee Repasch
repasch@gwumc.edu

**GW SPHHS
Department of Health
Policy**

2021 K Street NW
Suite 800
Washington, DC 20006

Phone: 202-296-6922
Fax: 202-296-0025

www.gwhealthpolicy.org



We're in touch, so you be in touch!

Please keep the DHP informed of your most current contact information.

If your mailing address, telephone, or e-mail address changes, please send an e-mail to:

Professor
Taylor Burke
taylorb@gwu.edu

The Department of Health Policy is the home for health policy studies and research at The George Washington University and its School of Public Health and Health Services. The Department focuses on virtually all phases of U.S. health policy -- both public health and health services -- and emphasizes preparing students to understand and analyze health policy matters in a broad, cross-cutting, and real-world context. Among Schools of Public Health, the SPHHS Department of Health Policy is unique; it has been created to take maximum advantage of our location in Washington D.C., the nation's health policy-making epicenter. The Department offers lectures and symposia on emerging issues in health policy throughout the academic year for students, graduates, and DC's health policy community. The Department's courses are taught by both core faculty, as well as faculty drawn from Washington D.C.'s health policy leadership. The curriculum is structured to train students in the methods and tools of health policy analysis, including qualitative and quantitative analysis techniques, legal analysis, economic analysis, and the preparation and presentation of research results and policy options to health policy makers.

Suggestions?
Do you have a suggestion for a DHP activity or for newsletter content?
We'd love to hear from you!
Please send an e-mail to Miranda Crowley
[*Miranda.Crowley@gwumc.edu*](mailto:Miranda.Crowley@gwumc.edu)

Valuable Calendar Resources for Health Policy Events

The Henry J. Kaiser Family Foundation's **Kaisernetwork.org** provides a searchable list of events in health policy, HIV/AIDS, women's health policy, global health and health disparities. It also offers complete listings for HealthCasts -- live and archived online video coverage of key meetings, conferences and other health policy events in Washington, D.C. and across the globe. Users can choose to view all events or select from various topics such as:

- HIV/AIDS
- Women's Health Policy
- Health Policy
- HealthCast
- Global Health
- Health Disparities

Calendars can be viewed for specific days, weeks, or months.

This is a particularly rich resource for those looking for opportunities to fulfill professional enhancement requirements for a degree, or for obtaining an insider's view on a topic that you are writing about.

Visit:
<http://www.kaisernetwork.org/calendar/calendar.cfm>

Hearings on the Hill

The schedules of House and Senate hearings and committee meetings is maintained at <http://thomas.loc.gov/home/schedules.html>. Here you can view congressional floor schedules:

- House Floor This Week
- House Committee Hearing Schedule
- Senate Committee Hearing Schedule
- Senate Floor Schedule
- Senate Majority Schedule
- Senate Minority Schedule
- Days-in-Session Calendars
- Senate Executive Calendar
- Current and Previous House and Senate Calendars
- Current and Previous Senate Calendars

GW Health Policy Student Association!

As the Spring semester comes to an end, the Health Policy Student Association would like to thank all of the Department of Health Policy students, faculty, and staff for your enthusiasm and support for helping us get HPSA off the ground this year. We've had a great time organizing social, educational, and community events for DHP students, and hope that the organization continues to grow and provide more opportunities for everyone in the Department.

Now speaking of enthusiasm and support, let's talk about the Nationals game last week! A whopping 81 of you joined us for the baseball game last Friday, April 17th—this was more than double our initial block of seats! Although the Nats ended up with a tough loss against the Florida Marlins in the 9th, it was a beautiful night, and we really appreciate everyone coming out for the game. You can be sure we'll do it again!

For our last event of the semester, HPSA is pairing up with Campus Progress and the Young Professionals in Foreign Policy to bring you "Inside Obama's First 100 Days," an exciting panel discussion that will examine and evaluate Obama's first 100 days in office, including his Administration's work on healthcare reform. The event is taking place on Thursday, April 30th from 6:30-7:30pm at the Center for American Progress, 1333 H Street NW. Check your email for additional details, or go to <http://www.campusprogress.org/events/3928/inside-obamas-first-100-days> for more information.

Finally, we are excited to announce the new HPSA officers for 2009-2010—congratulations and good luck next year!

President: Emma Sandoe

Vice President of Communications: Mariza Hardin

Vice President of Events: Amy Erhardt

Treasurer: Susan Baade

For more information about HPSA or to share your ideas for new HPSA events, please contact Stephanie David at Stephanie.David@gwumc.edu or Emma Sandoe at esandoe@gwmail.gwu.edu.

