

HEALTH POLICY HIGHLIGHTS

THE MONTHLY NEWSLETTER OF THE GW SPHHS
DEPARTMENT OF HEALTH POLICY

INSIDE THIS ISSUE:

Volunteer Opportunities	2
Upcoming Conferences	2
Health Policy in the News	3
Article Title	3
DHP Calendar	4
Article Title	5
Center News	5
Calendar Resources for Health Policy	6
Organization Info	7

A MESSAGE FROM DHP CHAIR, SARA ROSENBAUM, JD



Welcome to 2009, at this most singular time in U.S. history generally and in the field of health policy in particular. A national election as transformative as any that most of us ever will live through has coincided with an economic crisis as deep as most of us ever have known. As the nation seeks to reposition itself both here and abroad, health reform looms as both a central challenge and an enormous opportunity. We hope to spend much of 2009 bringing this sense of reform and change to you, through our classes and informal seminars and through quiet discussions. We are fortunate to count among our faculty some of Washington D.C.'s best minds in all phases of health policy. Our research spans literally all phases of health policy reform, from the complexities involved in reinventing an insurance system capable of addressing the needs of 21st century U.S. society, to the advancement of policies aimed at reducing the burden of illness and disability, improving the accessibility and quality of care and reducing public health risks.

Watch for our calendar of upcoming events and frequent announcements of new reports and publications. I am particularly fortunate to have been able to serve as co-editor with Dr. Jeanne Lambrew, who now serves as Associate Director of President Obama's Office of National Health Reform, a special issue of the Journal of Law Medicine and Ethics that is devoted entirely to the topic of health reform. We look forward to having Dr. Lambrew join us for a special evening with students in the spring. Other notable guests include Dr. Karen Davis of the Commonwealth Fund, who will deliver the first annual Richard and Janet Southby Lecture in Comparative Health Policy and Cindy Mann, one of the nation's leading experts in child health policy. We look forward to a vibrant year with our Student Health Policy Association and the Young Health Professionals Society, which we are delighted to host.

For those readers who are in class this semester, enjoy! For our alums, we look forward to your active involvement with us and the students!

To submit items of interest, e-mail Miranda Crowley, Miranda.Crowley@gwumc.edu by the first Friday of the month.

Thank you to DHP Staff Becky Beauregard, Rick Mauery, and Lee Repasch for their assistance in producing this newsletter.

Be sure to check out the redesigned DHP website:

www.gwhealthpolicy.org

Many thanks to Michael Sandstrom for efficiently redesigning the site to include a "QuickLinks" menu, an Intranet for faculty and staff, and for his continued work on the creation of dynamic database that will house and keep track of publications produced by our fabulous faculty and staff.

Thanks Michael!

Dept. of Health Policy Professional Mentoring Program

All current SPHHS Health Policy Students and SPPPA students with a concentration in Health Policy are invited to join our Professional Mentoring Program. This program is intended to match health policy students with professionals in the field to provide career advice, networking opportunities, research ideas, and more.

Program Goals

- To provide an opportunity for students to learn from "professional advisors" who are currently working in the health policy field;
- To create a relationship with a mentor who can assist you in making choices about research projects, pro bono opportunities, career paths, future schooling, etc. during and after your time at GW;
- To establish a network of mentors who may be available for formal roles as special projects preceptors and thesis or dissertation advisors;
- To strengthen the ties between students, mentors, and the Health Policy program.

If you are interested in learning more about the program, please review the Mentor and Student guidelines available at:

www.gwumc.edu/sphhs/healthpolicy/mentor/

HEALTH AND MEDICAL VOLUNTEER OPPORTUNITIES

Teen Life Clubs Volunteers
Children's National Medical Center
2220 11th St. NW
Washington, DC 20001

Started in 1997, the Teen Life Clubs (TLC) are after-school health education empowerment programs for 11-14 year olds, housed in the Division of Adolescent and Young Adult Medicine at Children's National Medical Center (CNMC). Using a holistic, curriculum-based approach to risk reduction, TLC integrates health information with decision-making and negotiation skills to prepare African American youth to safely navigate adolescence and make informed, responsible choices. Volunteer Opportunities & commitment include: Homework Tutoring, Group Facilitator, Career Sessions Volunteer, Youth Mentor, Coordinate Special Events and General Volunteer.

Contact: Aarti Shastry (202) 884-6018

Volunteers

National Coalition for Cancer Survivorship
1010 Wayne Avenue, Suite 770
Silver Spring, MD 20910

This opportunity to learn and assume responsibility for timely and critically needed programs and/or policy initiatives would be an excellent addition to a resume as well as a door-opener to future job prospects. Duties: · Writing about, and advocating for, cancer survivorship issues and policies in conjunction with experienced NCCS staff · Conducting internet research on cancer survivorship policy issues and prospective funders · Assisting in legislative initiatives by advocating for patient centered cancer survivor needs · Initiating and convene a new series of roundtable discussions on cancer survivor topics with medical experts and cancer donors

Contact: Jane Griffith (301) 562-2771
or (301) 650-9127

For a comprehensive listing of a diverse array of volunteer opportunities in the Metro DC area, please visit:
www.volunteermatch.org

UPCOMING CONFERENCES



National Spring
Conference
April 5 - 7, 2009

'Unity of Purpose in Hard Times'

This past December, APHSA turned the page on the next chapter in its work confirming policy that supports the needs of America's public health and human service agencies. Commissioners and administrators from across the country gathered in Nashville to complete Focal Point, APHSA's blueprint for federal policy on the programs that help millions of needy Americans. This April, we invite you to join us as we take the next step in making this blueprint a reality. As America faces its greatest economic test in a generation, the need now is greater than ever. We gladly accept the challenge of the Obama Administration to bring our best ideas forward to help our fellow citizens who are struggling in this difficult time. As we meet this spring, we will be working to help federal policy-makers as they work diligently to address the growing crisis gripping our nation.

- ◆ This conference will be the only national conference that will be held this year and will be one of the few times that you and your staff might have the opportunity to address federal decision-makers.
- ◆ You'll have the opportunity to engage in face-to-face dialogue with featured speakers who are leaders in the development of health and human service policy.
- ◆ You'll receive meaningful overviews of the key federal issues that will affect our programs and be able to participate in breakout sessions that will concentrate on interdisciplinary approaches to some of the more complicated issues now facing us and those we serve.

Conference information and updates are on APHSA's conference web site at <http://www.aphsa.org/Conference/calendar.asp>



HEALTH POLICY IN THE NEWS

New Economic Legislation Provides Major Increases in Health and Health Care Spending – Makes Comprehensive Reforms in Health Law and Policy.

President Barack Obama signed the American Recovery and Reinvestment Act of 2009 into law on February 17, 2009. The Department's Hirsh Health Law and Policy Program has prepared an Issue Brief and an Overview of the major health information technology (HIT), public health, Medicaid and COBRA provisions of the Act. In some cases, the legislation creates new law, while in others it significantly amends existing laws, in particular Medicare and Medicaid. The Act also includes hundreds of billions of dollars in new health and health care spending.

Highlights of the new law include:

- ◆ Creation of a new federal program

that supports the development of HIT

- ◆ A temporary increase for federal Medicaid contributions
- ◆ Establishment of a Federal Coordinating Council for Comparative Effectiveness Research
- ◆ Immediate income-related premium assistance for COBRA coverage for individuals who were involuntarily terminated from their employment in 2008 after September 1st.
- ◆ \$1.5 billion for health center construction, renovation, equipment and acquisition of HIT.
- ◆ A \$500 million investment in the primary health care workforce

For more information visit:

<http://www.gwumc.edu/sphhs/departments/healthpolicy/index.cfm>

SPOTLIGHT ON NATIONAL HEALTH REFORM



On February 5th U.S. Senators Ron Wyden and Bob Bennett were joined by 11 other Senators in introducing a national health reform

bill to the Senate. S.391, the "Healthy Americans Act" (HAA), would establish a new health insurance purchasing system requiring most individuals to purchase private health insurance. While the Medicare program and the military health system would remain in place, enrollees in Medicaid and the State Children's Health Insurance Program (SCHIP) would have their insurance coverage shifted to the new system. Enrollment would be optional for individuals enrolled in the health system of the Department of Veterans Affairs or the Indian Health Service.

Individuals would be able to choose from a variety of private plans offered in their states through state-based Health Help Agencies that would approve health plans, provide for enrollment in plans and act as a conduit for premium payments from the Federal government to individual

insurance carriers. All health plans initially offered to individuals would be required to offer a minimum benefits package benchmarked to the actuarial value of the Federal Employees Health Benefits (FEHB) Program standard benefit option Blue Cross/Blue Shield plan for 2009. Sliding insurance premium subsidies would be provided for individuals and families with incomes below 400 percent of the Federal poverty level. This comprehensive reform bill includes a variety of additional provisions that are intended to advance principles of choice, portability, market competition, transparency, tax reform, health promotion and quality.

Senators Wyden and Bennett offer more detailed information about S.391 on their websites:

http://www.wyden.senate.gov/issues/Legislation/Healthy_Americans_Act.cfm

<http://www.bennett.senate.gov/healthyamericans/>

Information about S.391 also can be found at: <http://www.thomas.gov>

SOCIETY OF HEALTH POLICY YOUNG PROFESSIONALS

The Society of Health Policy Young Professionals was founded in May 2006 on behalf of DC-area young professionals working or interested in the health, health care, and health policy fields. The Society is an innovative organization created to foster new relationships among young professionals, to provide a forum for networking and socializing, as well as to organize professional development and skill-building events.

For information about upcoming Society events, please visit the website and event calendar of the Society for Health Policy Young Professionals at <http://dchealthpolicy.org>.

Your Student Representatives on the DHP Student Affairs Committee

Do you have an idea for a DHP event? Suggestions you would like to offer the DHP to improve your experience as a student in the Department?

Please contact the following individuals who serve on the DHP Student Affairs Committee:

MPH: Stephanie David
Stephanie.David@gwumc.edu

DrPH: Saqi Maleque
saqi@gwu.edu

PhD: Emily Jones
emilybjones@gmail.com

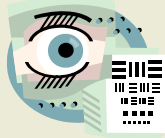
DHP FEBRUARY CALENDAR

February 2009

Events are at DHP, 2021 K Street, NW, Suite 800 unless otherwise indicated

- ◆ Health Policy and Medical Education Joint Lecture "Medical Education and Health Care Reform" (Gulzar Shah on Friday, February 13 in Ross Hall 116A)
- ◆ Public Health Grand Rounds (Dr. Michel D. Kazatchkine on Tuesday, 02/17 at noon – GWU Hospital Auditorium)

SUN	MON	TUE	WED	THU	FRI	SAT
1	2	3	4	5	6	7
8	9	10	11	12	13 Health Policy Lecture	14
15	16 Presidents' Day	17 Grand Rounds	18	19	20	21
22	23 Brown Bag Lunch	24	25	26	27	28



Watch your e-mail for late-breaking events and any changes to our calendar!

March 2009

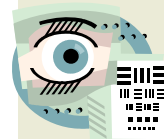
DHP OCTOBER CALENDAR

Events are at DHP, 2021 K Street, NW, Suite 800 unless otherwise indicated

- ◆ Public Health Grand Rounds (Larry Gostlin on Tuesday, 03/10 at noon – GWU Hospital Auditorium)

Suggest an event! E-mail Lee Repasch at Lee.Repasch@gwumc.edu if you have an idea for a brown-bag lunch, seminar, or other health policy gathering.

SUN	MON	TUE	WED	THU	FRI	SAT
1	2	3	4	5	6	7
8	9	10 Grand Rounds	11	12	13	14
15	16	GWU Spring Break				21
22	23	24	25	26	27	28
29	30	31				



Watch your e-mail for late-breaking events and any changes to our calendar!

**GWUMC's 14th Annual Health Sciences Research Day is
Wednesday, April 1, 2009**

**Frontiers in Mental Health:
Recent Advances and Future Directions**

Research Day is the annual presentation of research from our own students, postdoctoral researchers, and faculty in the GW community who are engaged in biomedical and health research. This symposium is a unique opportunity for researchers to share their own work and benefit from the work of others.



Thomas R. Insel, M.D.

The 2009 program includes oral research presentations by students and residents, awards and a special review of extramural and intramural research resources. This year's keynote speakers are Thomas Insel, MD, Director of the National Institute of Mental Health and former Surgeon General David Satcher, MD, PhD who currently directs the Center of Excellence on Health Disparities at the Morehouse School of Medicine.



David Satcher, M.D.,
Ph.D.

Research Day is open to all! Mark your calendars!
For more information visit:
<http://www.gwumc.edu/research/researchday.html>

News from Alumni

- ◆ After serving at Congresswoman Allyson Schwartz's healthcare Legislative Aide, Fall '08 grad **Kate Gross** has joined the healthcare team of Senator John D. Rockefeller. She can be reached at kate_gross@rockefeller.senate.gov
- ◆ Spring '08 grad **Jenny Schwartz** is now at the University of California—San Diego, pursuing her PhD in Preventive Medicine/Health Behavior Research.
- ◆ Spring '08 grad **Jo Lister** is a Senior Research Assistant with the Department of Health Policy, primarily working with the DC Department of Healthcare Finance, Child and Family Services Agency and DC Public Schools.
- ◆ **Jessica Schubel**, a Summer '08 grad, will be starting a new position as the Special Projects Coordinator with DC's Department of Healthcare Finance.

Are you an Alum with news you'd like to share?
We'd love to hear from you!
Please send an e-mail to [Lee Repasch](mailto:Lee.Repasch@gwumc.edu)
[leerepasch@gwumc.edu](mailto:Lee.Repasch@gwumc.edu)

**The Geiger Gibson
Program in
Community
Health Policy**

is a special initiative of The George Washington University School of Public Health and Health Services. This program was established in 2004 to honor Drs. H. Jack Geiger and Count Gibson, pioneers in community health practice and tireless advocates for civil and human rights.

<http://www.gwumc.edu/sphhs/healthpolicy/ggprogram/>

Online Jobs Lists

GW and the SPHHS maintain online job lists as a way to connect students with job opportunities throughout the world of Health Policy (and elsewhere). You may search by key words and view the jobs by job category, as well as all at once:

- Full-Time jobs
- Part-Time jobs
- Internships
- Fellowships

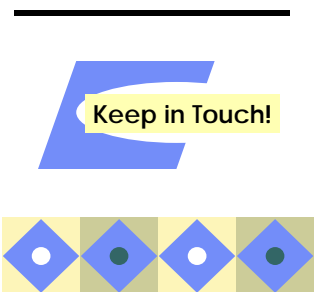
For more information, visit:
<http://gwired.gwu.edu/career/>
and
<http://www.gwumc.edu/sphhs/studentres/careers/jobs/>

**GW SPHHS
Department of Health
Policy**

2021 K Street NW
Suite 800
Washington, DC 20006

Phone: 202-296-6922
Fax: 202-296-0025

www.gwhealthpolicy.org



We're in touch, so you be in touch!

Please keep the DHP informed of your most current contact information.

If your mailing address, telephone, or e-mail address changes, please send an e-mail to:

Professor
Taylor Burke
taylorb@gwu.edu

The Department of Health Policy is the home for health policy studies and research at The George Washington University and its School of Public Health and Health Services. The Department focuses on virtually all phases of U.S. health policy -- both public health and health services -- and emphasizes preparing students to understand and analyze health policy matters in a broad, cross-cutting, and real-world context. Among Schools of Public Health, the SPHHS Department of Health Policy is unique; it has been created to take maximum advantage of our location in Washington D.C., the nation's health policy-making epicenter. The Department offers lectures and symposia on emerging issues in health policy throughout the academic year for students, graduates, and DC's health policy community. The Department's courses are taught by both core faculty, as well as faculty drawn from Washington D.C.'s health policy leadership. The curriculum is structured to train students in the methods and tools of health policy analysis, including qualitative and quantitative analysis techniques, legal analysis, economic analysis, and the preparation and presentation of research results and policy options to health policy makers.

Suggestions?
Do you have a suggestion for a DHP activity or for newsletter content?
We'd love to hear from you!
Please send an e-mail to Miranda Crowley
[*Miranda.Crowley@gwumc.edu*](mailto:Miranda.Crowley@gwumc.edu)

Valuable Calendar Resources for Health Policy Events

The Henry J. Kaiser Family Foundation's **Kaisernetwork.org** provides a searchable list of events in health policy, HIV/AIDS, women's health policy, global health and health disparities. It also offers complete listings for HealthCasts -- live and archived online video coverage of key meetings, conferences and other health policy events in Washington, D.C. and across the globe. Users can choose to view all events or select from various topics such as:

- HIV/AIDS
- Women's Health Policy
- Health Policy
- HealthCast
- Global Health
- Health Disparities

Calendars can be viewed for specific days, weeks, or months.

This is a particularly rich resource for those looking for opportunities to fulfill professional enhancement requirements for a degree, or for obtaining an insider's view on a topic that you are writing about.

Visit:
<http://www.kaisernetwork.org/calendar/calendar.cfm>

Hearings on the Hill

The schedules of House and Senate hearings and committee meetings is maintained at <http://thomas.loc.gov/home/schedules.html>. Here you can view congressional floor schedules:

- House Floor This Week
- House Committee Hearing Schedule
- Senate Committee Hearing Schedule
- Senate Floor Schedule
- Senate Majority Schedule
- Senate Minority Schedule
- Days-in-Session Calendars
- Senate Executive Calendar
- Current and Previous House and Senate Calendars
- Current and Previous Senate Calendars

Introducing the GW Health Policy Student Association!

Health Policy students now have an official GW organization to call their own! Founded by several MPH Health Policy students last Fall, the Health Policy Student Association (otherwise known as "HPSA"), received official recognition from the University in October 2008, and is open to all GW students in degree and certificate programs through the Department of Health Policy.

HPSA's goal is to provide educational, social, and career-networking events to Health Policy students, and organize opportunities for students to get to know each other and the DHP faculty outside of the classroom. To kick-off the new organization, on October 27th HPSA connected with other student organizations in the DC community and co-hosted "Sick and Broke: Elizabeth Edwards on Health Care," along with Campus Progress, the Society for Health Policy Young Professionals, and the American Medical Students Association. Held in Ross 101, Elizabeth Edwards shared her views and answered audience questions about health reform and problems with the current health care system, particularly in light of her own cancer experience.

Tapping into its social mission, HPSA also hosted an Election Results Viewing Party at Buffalo Billiards in DuPont Circle on November 6th. DHP students, faculty, and staff (several of whom were decked out in creative candidate paraphernalia) gathered after classes to watch the returns come in until President

Obama was announced as the winner at 11:00pm.

Now in the Spring Semester, HPSA's events are again underway. On February 2-3, six Health Policy students, chosen randomly at HPSA's October meeting, attended for free Academy Health's National Health Policy Conference thanks to the generosity of DHP. Moreover, on Wednesday, February 11th, HPSA is hosting a trip to the Hill for Health Policy students to attend the House Committee on Energy and Commerce hearing on the peanut butter salmonella outbreak. To round out the month, HPSA will be co-sponsoring a happy hour with the Student Health Law Association on Thursday, February 26th at Mackey's Pub from 6pm-8pm.

HPSA is planning additional events for March and April, which we hope all Health Policy students, faculty and staff will attend (for all of you baseball fans out there, a Nationals game is in the works!). HPSA will also be holding officer elections in April, with the winners to be announced at the DHP End-of-Year Party. Stay tuned to your email for more information!

We're always looking for event suggestions! Please contact Stephanie David at Stephanie.David@gwu.edu for information about HPSA or to share your ideas.

HPSA 2008-2009 Officers:

Stephanie David

Mariza Hardin

Fadesola Adetosoye

Elizabeth Dawes

Mark Dorley

Emma Sandoe

HPSA Faculty Advisor: Professor Kristin Younger