

HEALTH POLICY HIGHLIGHTS

THE MONTHLY NEWSLETTER OF THE GW SPHHS
DEPARTMENT OF HEALTH POLICY

August 27, 2008

FALL SEMESTER 2008

WELCOME, DEPARTMENT OF HEALTH POLICY STUDENTS!

INSIDE THIS ISSUE:

Volunteer Opportunities 2

Upcoming Conferences 2

Health Policy in the News 3

Election 2008 Resource 3

DHP Calendar, Sept.-Oct. 4

Critical Condition on PBS 5

New Center for Integrated Behavioral Health Policy 5

Calendar Resources for Health Policy 6

Society of Health Policy Young Professionals 7

A MESSAGE FROM DHP CHAIR, SARA ROSENBAUM, JD



On behalf of everyone here in the Department, let me welcome those of you who are just beginning your studies with us and welcome back our current students. You will find our faculty and staff a whirling hub of activity and very eager to involve our students whenever possible – not just in class, but also in our dozens of research and policy projects, informal meetings and seminars, and formal events. I encourage you all to scour our website (www.gwumc.edu/sphhs/departments/healthpolicy) find projects in which you may be interested, and follow up with

me so that I can connect you with the right faculty and staff members. I also welcome drop-by students, beginning September 8th, every Monday from noon—3:00 pm (and you always can call for appointments if this time does not work—202-530-2343).

This being a year when Americans choose a President, the House of Representatives, and a third of the Senate, you will find policy, politics and health reform a recurring theme throughout the academic year. In addition to our regularly scheduled events that appear on the Department calendar, we will plan an informal brown bag lunch for students in the weeks following the election so that we might as a group discuss its implications for national health reform implications.

find our faculty and staff a whirling hub of activity and very eager to involve our students whenever possible – not just in class, but also in our dozens of research and policy projects, informal meetings and seminars, and formal events. I encourage you all to scour our website (www.gwumc.edu/sphhs/departments/healthpolicy) find projects in which you may be interested, and follow up with

Collegiality is Key in the DHP!

Shown at right are several former and current DHP students enjoying last year's department holiday party. We provide numerous professional and social gatherings each year to enhance collegial and collaborative relationships among faculty and students.

We hope you all can take full advantage of these great occasions!



Photo by L. Repasch © 2007

To submit items of interest, e-mail Rick Mauery at rmauery@gwu.edu before the end of the month.

Thank you to DHP Professor Rick Mauery, and DHP Public Affairs Liaison Lee Repasch for their assistance in producing this newsletter.

Dept. of Health Policy Professional Mentoring Program

All current SPHHS Health Policy Students and SPPPA students with a concentration in Health Policy are invited to join our Professional Mentoring Program. This program is intended to match health policy students with professionals in the field to provide career advice, networking opportunities, research ideas, and more.

Program Goals

- To provide an opportunity for students to learn from "professional advisors" who are currently working in the health policy field;
- To create a relationship with a mentor who can assist you in making choices about research projects, pro bono opportunities, career paths, future schooling, etc. during and after your time at GW;
- To establish a network of mentors who may be available for formal roles as special projects preceptors and thesis or dissertation advisors;
- To strengthen the ties between students, mentors, and the Health Policy program.

If you are interested in learning more about the program, please review the Mentor and Student guidelines available at:

www.gwumc.edu/sphhs/healthpolicy/mentor/

HEALTH AND MEDICAL VOLUNTEER OPPORTUNITIES

G.W. Health Insurance Counseling Project 2136 Pennsylvania Ave., NW Washington, DC 20037

The G.W. Health Insurance Counseling Project helps people with Medicare when they have questions, choices to make, or problems paying for or obtaining health care. Whether the problem is with private health insurance, or with public programs such as Medicare or Medicaid, we help people to resolve difficulties so that they can receive the health care they need. The G.W. Health Insurance Counseling Project is a small community service organization, located within the Jacob Burns Legal Clinics of the George Washington Law School.

Contact: Suzanne Jackson, 202-739-0668

Volunteers to Support Public Health in an Emergency

Alexandria Health Department - Medical Reserve Corps

4480 King Street, 4th floor, Alexandria, VA
22302

The Alexandria Medical Reserve Corps (MRC) is seeking medical and non-medical volunteers to support public health in an emergency or disaster. The MRC is a nationwide program of local volunteers. In Alexandria, the initial time requirement is a 2-hour orientation; after that it's up to you as to how much time you want to devote. To find an MRC unit in your community, go to www.medicalreservecorps.gov and click on Find a Unit. We offer free training in areas such as public health, emergency management, CPR, epidemiology and much more. We conduct drills and exercises so that we are prepared for the next public health emergency, whether it's a pandemic flu, hurricane or terror event. Skills: A positive attitude and willingness to help! Medical volunteers needed, but looking for people with all sorts of professional backgrounds.

Contact: Cyndi Lake, 703-838-4400 ext.283

**For a comprehensive listing of a diverse
array of volunteer opportunities in the Metro
DC area, please visit:
www.volunteermatch.org**

UPCOMING CONFERENCES



2008 Annual Meeting & Exposition in San Diego, CA October 25-29, 2008

The APHA Annual Meeting & Exposition is the premier Public Health Educational Forum! Learn from the experts in the field, hear about cutting edge research and exceptional best practices, discover the latest public health products and services, and share your public health experience with your peers. The world of public health is in continual motion, and there is no better time to stay abreast of the research and learn about emerging issues.

The APHA Annual Meeting & Exposition is the oldest and largest gathering of public health professionals in the world, attracting more than 13,000 national and international physicians, administrators, nurses, educators, researchers, epidemiologists, and related health specialists. APHA's meeting program addresses current and emerging health science, policy, and practice issues in an effort to prevent disease and promote health. APHA has a world of public health in store for you.

The San Diego Convention Center will house the Public Health Expo, Registration, the Opening General Session, Poster Sessions as well as hundreds of scientific sessions, social hours and business meetings. Scien-



tific sessions have also been scheduled at two nearby hotels. Discounted APHA hotel rates will be available at 16 downtown hotels. The Guide to the Location of Sections, SPIGs and Caucuses will provide a snapshot of where sessions for each subgroup will take place. Visit www.apha.org.

HEALTH POLICY IN THE NEWS

Uninsured U.S. Residents Will Spend \$30B Out-of-Pocket on Health Care This Year, While Receiving \$56B in Uncompensated Care, Study Finds

"Uninsured U.S. residents will spend about \$30 billion out-of-pocket on health care this year, while other parties -- mainly the government -- will spend about \$56 billion on uncompensated care for the uninsured, according to a study published online Monday in the journal *Health Affairs*, the *Wall Street Journal* reports. The report, by Jack Hadley of George Mason University and colleagues, found that government programs -- including Medicare, Medicaid and state and local programs -- pay about 75% , or \$42.9 billion, of the amount uninsured individuals are unable to pay for services received. Some physicians and hospitals also donate time or forgo profit to care for low-income residents, and in some cases private donations cover the costs.

The report defined uncompensated care as the difference between the amount the uninsured paid and how much health care providers would have received if the patients

had been privately insured.

Hadley said that uncompensated care does not necessarily translate into higher insurance premiums for private plan members as some believe, the *Journal* reports. He said unfunded care will have a "very small" impact on premiums, adding, "It's more through taxes than private insurance bills."

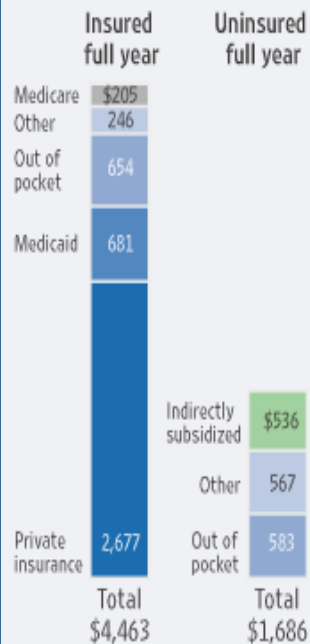
The report found that the total additional cost to the health system of covering all uninsured U.S. residents in 2008 would be \$122.6 billion, driven by the fact that insured people tend to use more health care services than the uninsured. Health care spending accounted for 16.3% of gross domestic product in 2007, or about \$2.2 trillion, and this portion could almost double in 10 years, according to federal data (Zhang, *Wall Street Journal*, 8/25)."

The *Health Affairs* article is available at: <http://content.healthaffairs.org/cgi/content/full/hlthaff.27.5.w399/DC1>

Source: Kaiser Daily Health Policy Report, 8/25/08

Health Expenses

Projected U.S. medical spending per capita, by insurance status and source of payment, 2008



Source: Health Affairs

ELECTION 2008—HOW WILL HEALTH POLICY FARE?



The presidential election is in full swing! Republican and Democratic Party candidates have all issued policy statements and endorsed ideas aimed at improving the U.S. health care system. To help sort out the differences and similarities in the candidates' positions, the Kaiser Family Foundation provides a website with up-to-date polling, analyses, facts, news, video, and interviews from Kaiser and a broad range of sources.

The presidential election is in full swing! Republican and Democratic Party candidates have all issued policy statements and endorsed ideas aimed at improving the U.S. health care system. To help sort out the differences and similarities in the candidates' positions, the Kaiser Family Foundation provides a website with up-to-date polling, analyses, facts, news, video, and interviews from Kaiser and a broad range of sources.

HEALTH08.ORG, A HUB FOR INFORMATION ABOUT HEALTH CARE AND THE PRESIDENTIAL CAMPAIGN

The new health08.org website is free of charge and does not include advertising. It serves as a hub of information about health and the election, including original content produced by Kaiser and easy access to health-related resources from the campaigns, other organizations, and news outlets. Elements of the site include:

- ◆ Analysis of health policy issues, summaries of health reform proposals, and basic facts and information about the health system

from Kaiser's research staff.

- ◆ Regular Kaiser tracking surveys examining the public's views on health issues and perceptions of the presidential candidates on health care, as well as links to the latest polls by other organizations.
- ◆ Syntheses of news coverage about health and the campaign, updated frequently.
- ◆ Video and podcasts from the campaign trail, including candidate speeches, and health-related highlights from forums and debates.
- ◆ Interviews with candidates and other key players in the health reform debate.
- ◆ Dedicated pages for the candidates, with easy-to-access links to their health positions and other resources.
- ◆ A calendar of events taking place around the country and links to studies and resources from other organizations.
- ◆ A weekly email roundup of developments related to health and the election and free syndication of content available to other websites.

Visit www.health08.org/news.cfm for more details.

Your Student Representatives on the DHP Student Affairs Committee

Do you have an idea for a DHP event? Suggestions you would like to offer the DHP to improve your experience as a student in the Department?

Please contact the following individuals who serve on the DHP Student Affairs Committee:

MPH: Stephanie David
Stephanie.David@gwumc.edu

DrPH: Saqi Maleque
saqi@gwu.edu

PhD: Emily Jones
emilybjones@gmail.com

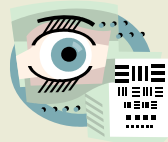
DHP SEPTEMBER CALENDAR

September 2008

Events are at DHP, 2021 K Street, NW, Suite 800 unless otherwise indicated

- ◆ Hirsh Grand Rounds (Kathleen Boozang on Thursday, 09/18 at noon – GWU Hospital Auditorium)
- ◆ Noontime Seminar (Gulzar Shah on Monday, 09/23 in DHP Large Conference Room)

SUN	MON	TUE	WED	THU	FRI	SAT
	1	2	3	4	5	6
7	8	9	10	11	12	13
14	15	16	17	18 Hirsh Grand Rounds	19	20
21	22	23 Gulzar Shah Seminar at noon	24	25	26	27
28	29	30 Critical Condition airs on PBS				



Watch your e-mail for late-breaking events and any changes to our calendar!

October 2008

DHP OCTOBER CALENDAR

Events are at DHP, 2021 K Street, NW, Suite 800 unless otherwise indicated

- ◆ Geiger Gibson Lecture with Ann Peters, CEO of Lamprey Health Care, 12:00 noon

Suggest an event! E-mail Lee Repasch at Lee.Repasch@gwumc.edu if you have an idea for a brown-bag lunch, seminar, or other health policy gathering.



Watch your e-mail for late-breaking events and any changes to our calendar!

SUN	MON	TUE	WED	THU	FRI	SAT
		1	2	3	4	
5	6	7	8	9	10	11
12	13	14	15	16	17	18
19	20	21	22 Ann Peters at noon	23	24	25
26	27	28	29	30	31	

Looking Ahead:

- ◆ Chat with the Chair (Monday, 11/3, noon)
- ◆ Edward Brant Symposium (Tuesday, 11/18)
- ◆ DHP Holiday Party (December 3, 3:00 – 5:00 p.m., location TBD)

Critical Condition—New PBS Documentary Chronicles the Effects of Being Uninsured in America



From the website:

"CRITICAL CONDITION, a new feature documentary by Roger Weisberg, paints a disturbing and gripping portrait of what happens when you're sick and uninsured like 47

million others in America. The unforgettable subjects of this cinema verité documentary discover that being uncovered can cost them their jobs, health, homes, savings, and even their lives. Unlike Michael Moore's *SICKO*, which illustrated the problems of people with private insurance, *CRITICAL CONDITION* looks at the harrowing struggles of people battling serious illness with no insurance whatsoever. By exposing the tragic human dimensions of this crisis, *CRITICAL CONDITION* will make viewers feel both outraged and motivated to address this national disgrace at the precise moment when health care reform will be debated during the run-up to the presidential election."

A production of Public Policy Productions in association with Thirteen/WNET New York

and American Documentary | P.O.V.

**Broadcast Date: Tuesday, Sep. 30, 2008
Special Broadcast at 9PM (90 mins)**

Stay tuned after the broadcast for an election special from MacNeil Lehrer Productions about the candidates' proposals to cover the uninsured.

From Director Roger Weisberg:

"During just the 90-minute running time of *CRITICAL CONDITION*, an additional 377 Americans will lose health coverage. As ever-increasing numbers of Americans become uninsured, this crisis will undoubtedly become the most hotly debated domestic policy issue in the 2008 presidential election, and that's precisely when *CRITICAL CONDITION* will be released. We've seen how recent films like *AN INCONVENIENT TRUTH* can become an effective call to action. I hope *CRITICAL CONDITION* can play a similar role as the health care reform debate heats up in 2008."

◆————◆
For more information and to see a preview trailer, visit:

www.pbs.org/pov/pov2008/criticalcondition/preview.html

New Center for Integrated Behavioral Health Policy



Eric N. Goplerud, PhD
Center Director

The George Washington University Medical Center has chartered a new Center for Integrated Behavioral Health Policy, which is dedicated to changing the way that people with mental health and substance use disorders get the help they need.

"Health reform is among this nation's most pressing problems, said Ruth J. Katz, JD, MPH, dean of the School of Public Health and Health Services. "This new center will make a valuable contribution to this debate by helping to design a system that both recognizes and

includes the needs of millions of Americans suffering from mental illness, substance use disorders and addiction."

"The Center will capitalize on its proximity to government, business, and health care leaders to address national issues like health care reform, changing health care financing incentives, and promoting quality standards," said Sara Rosenbaum, JD, chair of the Department of Health Policy. The Center is located in the Department of Health Policy.

The Center will work with employers and public health care purchasers, health plans, physicians and other health care providers, and government leaders to create policies and practices that integrate behavioral and physical health.

The Geiger Gibson Program in Community Health Policy

is a special initiative of The George Washington University School of Public Health and Health Services. This program was established in 2004 to honor Drs. H. Jack Geiger and Count Gibson, pioneers in community health practice and tireless advocates for civil and human rights.

<http://www.gwumc.edu/spbhs/healthpolicy/ggprogram/>

Online Jobs Lists

GW and the SPHHS maintain online job lists as a way to connect students with job opportunities throughout the world of Health Policy (and elsewhere). You may search by key words and view the jobs by job category, as well as all at once:

- Full-Time jobs
- Part-Time jobs
- Internships
- Fellowships

For more information, visit:

<http://gwired.gwu.edu/career/>

and

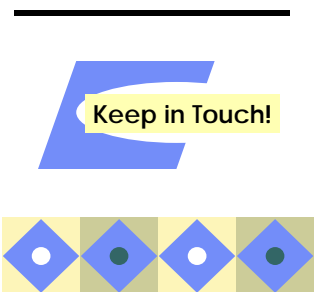
<http://www.gwumc.edu/spbhs/studentres/careers/jobs/>

**GW SPHHS
Department of Health
Policy**

2021 K Street NW
Suite 800
Washington, DC 20006

Phone: 202-296-6922
Fax: 202-296-0025

www.gwhealthpolicy.org



We're in touch, so you be in touch!

Please keep the DHP informed of your most current contact information.

If your mailing address, telephone, or e-mail address changes, please send an e-mail to:

Professor
Taylor Burke
taylorb@gwu.edu

The Department of Health Policy is the home for health policy studies and research at The George Washington University and its School of Public Health and Health Services. The Department focuses on virtually all phases of U.S. health policy -- both public health and health services -- and emphasizes preparing students to understand and analyze health policy matters in a broad, cross-cutting, and real-world context. Among Schools of Public Health, the SPHHS Department of Health Policy is unique; it has been created to take maximum advantage of our location in Washington D.C., the nation's health policy-making epicenter. The Department offers lectures and symposia on emerging issues in health policy throughout the academic year for students, graduates, and DC's health policy community. The Department's courses are taught by both core faculty, as well as faculty drawn from Washington D.C.'s health policy leadership. The curriculum is structured to train students in the methods and tools of health policy analysis, including qualitative and quantitative analysis techniques, legal analysis, economic analysis, and the preparation and presentation of research results and policy options to health policy makers.

Suggestions?
Do you have a suggestion for a DHP activity or for newsletter content?
We'd love to hear from you!
Please send an e-mail to Rick Mauery rmauery@gwu.edu.

Valuable Calendar Resources for Health Policy Events

The Henry J. Kaiser Family Foundation's **Kaisernetwork.org** provides a searchable list of events in health policy, HIV/AIDS, women's health policy, global health and health disparities. It also offers complete listings for HealthCasts -- live and archived online video coverage of key meetings, conferences and other health policy events in Washington, D.C. and across the globe. Users can choose to view all events or select from various topics such as:

- HIV/AIDS
- Women's Health Policy
- Health Policy
- HealthCast
- Global Health
- Health Disparities

Calendars can be viewed for specific days, weeks, or months.

This is a particularly rich resource for those looking for opportunities to fulfill professional enhancement requirements for a degree, or for obtaining an insider's view on a topic that you are writing about.

Visit:
<http://www.kaisernetwork.org/calendar/calendar.cfm>

Hearings on the Hill

The schedules of House and Senate hearings and committee meetings is maintained at <http://thomas.loc.gov/home/schedules.html>. Here you can view congressional floor schedules:

- House Floor This Week
- House Committee Hearing Schedule
- Senate Committee Hearing Schedule
- Senate Floor Schedule
- Senate Majority Schedule
- Senate Minority Schedule
- Days-in-Session Calendars
- Senate Executive Calendar
- Current and Previous House and Senate Calendars
- Current and Previous Senate Calendars

Society of Health Policy Young Professionals

Upcoming Social and Professional Development Events September/October

Speed Networking

Please join us for a speed networking event that will provide a great way to meet other young professionals in the health policy field. Similar to the speed dating concept, you'll have 4 minutes to chat with each person in the line across from you so as to share information about your interest in health policy and your career goals along with an exchange of business cards. Exact location and date TBD.

Happy Hour - Head for the Hill!

- Join the Society as we take a break from norm (i.e. Dupont Circle) and venture to Capitol Hill in late September for our monthly happy hour and a great networking opportunity.
- Location, date and time TBD. Watch for more info coming soon!

Meet the Experts

Join us for the first in a series of panel discussions featuring prominent experts in the health policy field.

Presidential Debate Viewing Parties

Join fellow Society members in watching the Presidential debates to learn more about the candidates' views on health care and other important issues.

For more information about upcoming Society events, please visit the website and event calendar of the Society for Health Policy Young Professionals at <http://dchealthpolicy.org>.

We look forward to kicking off the fall with another successful event!

Please pass this announcement on to other health policy young professionals!