
 **Item B**
DEPARTMENT OF NURSING EDUCATION

Planning a National Nursing Quality and Safety Alliance

Progress and Next Steps


Ellen T. Kurtzman, MPH, RN
 Assistant Research Professor
 The George Washington University
 Department of Nursing Education

© The George Washington University
 Do not cite, quote, or distribute without permission 1

 **Planning a National Nursing Quality and Safety Alliance**
DEPARTMENT OF NURSING EDUCATION

- Envisioned as a first stage, exploratory effort
- RWJF-funded planning grant underway September 2008
- GW's Department of Nursing Education serves as 'neutral convener'
- Explores the nature of nursing's voice in transparency and accountability policies and the need for a unified 'policy voice'
- Enables facilitated discussions among national nursing leaders with expanded input from the broader nursing constituencies
- Responds to key questions: How might nursing strengthen its voice in policy related to performance measurement, public reporting, and value-based purchasing? What formal arrangements, if any, should be pursued – vis-à-vis establishing a Nursing Quality and Safety Alliance – to ensure that nursing's voice is unified on these issues?

© The George Washington University
 Do not cite, quote, or distribute without permission 2

 **Key Activities**
DEPARTMENT OF NURSING EDUCATION

- Convened leaders from national nursing organizations
- Extended outreach to > 75 national nursing organizations
- Explored quality landscape including roles and structures of quality alliances (e.g., HQA, AQA, KCQA, etc.)
- Inventoried nursing quality and safety initiatives
- Contemplated NQSA mission, purpose, priorities
- Explored role of consumers, patients, families (e.g., NQSA versus NPQA)
- Conducted SWOT analyses

© The George Washington University
 Do not cite, quote, or distribute without permission 3



Ongoing Progress

THE GEORGE WASHINGTON UNIVERSITY MEDICAL CENTER
DEPARTMENT OF NURSING EDUCATION

- “Deep(er) dive” on the motivation for establishing NQSA and the role(s) of consumers, patients, families and other stakeholders
- Mission, purpose, and priority statements finalized
- Ongoing discussions with RWJF
- Consideration of organizing structures (e.g., oversight and management, governance and leadership, membership, etc.)

↓

Launch NQSA

© The George Washington University
Do not cite, quote, or distribute without permission

5


NQSA's Primary Aim

THE GEORGE WASHINGTON UNIVERSITY MEDICAL CENTER
DEPARTMENT OF NURSING EDUCATION

- Influence quality-related health policy directions
- Presence of a nursing ‘voice’ in transparency and accountability agendas
- Direction of NQSA as a nursing-oriented and nursing-driven collaborative with support from others
- Role of other stakeholders
 - Consumers as “co-leaders”
 - Diverse constituency

© The George Washington University
Do not cite, quote, or distribute without permission

6




NQSA's Mission

DEPARTMENT OF NURSING EDUCATION

NQSA is a bold partnership among the nation's leading nursing organizations to "advance the highest quality, safety, and value of consumer-centered health care for all individuals—patients, families, and communities."

© The George Washington University
Do not cite, quote, or distribute without permission

7



NQSA's Purposes


DEPARTMENT OF NURSING EDUCATION

To achieve its aim, NQSA will work to ensure that:

- Patients receive the right care at the right time by the right professional.
- Nurses actively advocate and are accountable for consumer-centered, high quality health care.
- Policymakers recognize the contributions of nurses in advancing consumer-centered, high quality health care.

© The George Washington University
Do not cite, quote, or distribute without permission

8



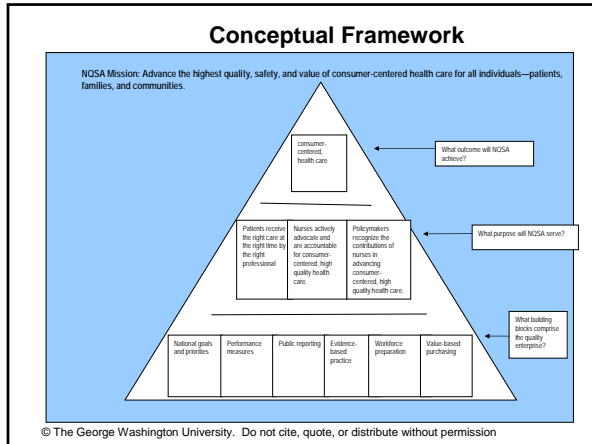
NQSA's Priorities

DEPARTMENT OF NURSING EDUCATION

- **Goal setting:** Establishing consumer-centered health care quality and safety goals that are relevant to the nursing profession.
- **Performance measurement:** Strengthening the visibility of nursing in performance measurement and public reporting activities.
- **Advocacy:** Serving as a resource to federal partners and stimulating policy reform that supports the adoption of evidence-based, best practices and advancement of consumer-centered, high quality health care.
- **Leadership:** Building nursing's capacity to serve in leadership roles that advance consumer-centered, high quality health care.
- **Quality improvement:** Identifying evidence-based models of consumer-centered, high-quality nursing care across the continuum and launching national improvement campaigns that unite this evidence with clinical practice.
- **Scholarship:** Promoting educational initiatives to ensure that nurses have the knowledge and skills to lead or effectively contribute to consumer-centered, high quality health care.

© The George Washington University. Do not cite, quote, or distribute without permission

9






Sources of Funding

DEPARTMENT OF NURSING EDUCATION

- RWJF as natural implementation partner
- National economic downturn has had significant implications
- Best case scenario - two years of funding support at \$900K
- Extraordinarily generous although substantially fewer resources than necessary to pursue full mission
- Proactive effort to secure other support

© The George Washington University
Do not cite, quote, or distribute without permission

11



NQSA's Priorities

DEPARTMENT OF NURSING EDUCATION

- **Goal setting:** Establishing consumer-centered health care quality and safety goals that are relevant to the nursing profession.
- **Performance measurement:** Strengthening the visibility of nursing in performance measurement and public reporting activities.
- **Advocacy:** Serving as a resource to federal partners and stimulating policy reform that supports the adoption of evidence-based, best practices and advancement of consumer-centered, high quality health care.
- **Leadership:** Building nursing's capacity to serve in leadership roles that advance consumer-centered, high quality health care.

- **Quality improve** high-quality nursing improvement camps
- **Scholarship:** Promote knowledge and skills

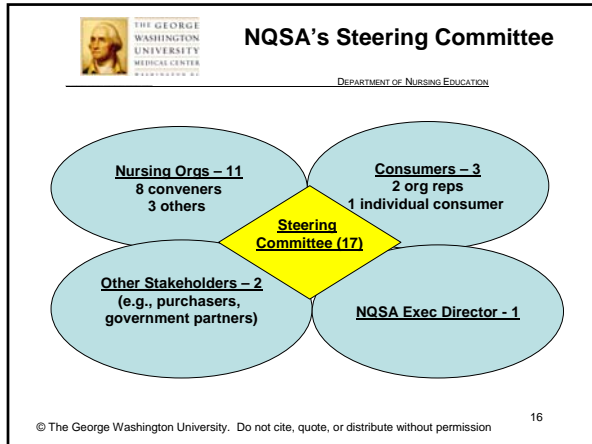
⊘

based models of consumer-centered, m and launching national nce with clinical practice.

ps to ensure that nurses have the tribute to consumer-centered, high


© The George Washington U or distribute without permission

12





-
- Next Steps**
- DEPARTMENT OF NURSING EDUCATION
- RWJF proposal submitted July 14th with funding decision mid-autumn
 - Finalize and formalize
 - rules of governance
 - personnel
 - Alliance's name, logo, and other branding elements
 - Continue to disseminate information and popularize knowledge about NQSA through publications, presentations, and web site
 - Formally launch NQSA - January 2010
- © The George Washington University. Do not cite, quote, or distribute without permission 18


 THE GEORGE WASHINGTON UNIVERSITY MEDICAL CENTER WASHINGTON DC

DEPARTMENT OF NURSING EDUCATION

Questions?

© The George Washington University
Do not cite, quote, or distribute without permission

19

 THE GEORGE WASHINGTON UNIVERSITY MEDICAL CENTER WASHINGTON DC

DEPARTMENT OF NURSING EDUCATION

For more information: **Ellen T. Kurtzman, MPH, RN**
Assistant Research Professor
George Washington University
Department of Nursing Education
900 23rd Street, NW
Room 6185
Washington, DC 20037
E: hspetk@gwumc.edu
T: 202.994.9439
Web: <http://www.gwumc.edu/healthsci/>

© The George Washington University
Do not cite, quote, or distribute without permission

20
