



The Nurse-Patient Quality Alliance Pathway

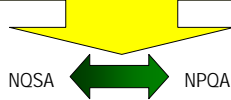
Planning a National Nursing Quality and Safety Alliance

Ellen T. Kurtzman, MPH, RN
Assistant Research Professor
The George Washington University
Department of Nursing Education



Emerging Direction

To establish an alliance with a dedicated focus on quality and safety in full partnership with consumers, patients, and their families



What are NPQA's organizational underpinnings and primary aims?



Organizational Underpinnings and Primary Aims

- Quality enterprise
- Mission
- Conceptual framework
- Purpose(s)
- Priorities
- Work activities



The Quality Enterprise's Building Blocks

DEPARTMENT OF NURSING EDUCATION

- National quality improvement goals and priorities
- Standard and consensually developed performance measures that enable evaluation of progress against goals and priorities
- Public reporting of health care performance to motivate improvements, hold providers accountable, and drive consumer and purchaser selection
- Translational evidence-based practice to stimulate rapid improvement
- Education and workforce preparation
- Value-based purchasing programs that align payment with performance and incentivize stakeholders to achieve higher levels of value

© The George Washington University
Do not cite, quote, or distribute without permission

4



Proposed Mission

DEPARTMENT OF NURSING EDUCATION

The mission of the Nurse-Patient Quality Alliance (NPOA) is to "advance person-centered, high value nursing care through partnership, innovation, and leadership."

© The George Washington University
Do not cite, quote, or distribute without permission

5



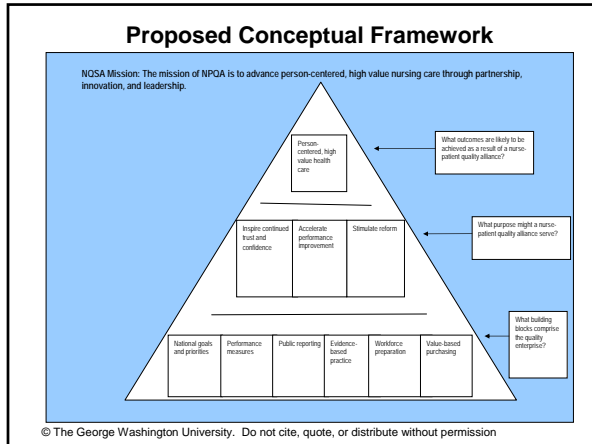
Proposed Purposes


DEPARTMENT OF NURSING EDUCATION

1. Inspire continued trust and confidence in the nursing profession among patients, their families, and the American public
2. Leverage nurses, the single largest health care workforce, together with patients, partners in their care, in accelerating performance improvement
3. Stimulate reform through shared perspectives, knowledge, and values among nurses and patients, their families, and consumer stakeholders

© The George Washington University
Do not cite, quote, or distribute without permission

6





Proposed Priorities


DEPARTMENT OF NURSING EDUCATION

Purpose 1: Inspire continued trust and confidence in the nursing profession among patients, their families, and the American public

- synthesize what is known about nurse-patient relationships and their importance
- articulate nurses' contributions to national quality improvement goals and priorities
- strengthen the visibility of nursing in performance measurement and public reporting activities
- establish an agenda for measure development
- advocate and support the endorsement by a national consensus standards setting organization of nursing-sensitive measures
- disseminate and communicate nursing's contribution to quality

© The George Washington University
Do not cite, quote, or distribute without permission

8



Proposed Priorities, cont.

DEPARTMENT OF NURSING EDUCATION

Purpose 2: Leverage nurses, the single largest health care workforce, together with patients, partners in their care, in accelerating performance improvement

- identify areas of low-level performance, significant variation, or suboptimal care for which nurses are accountable and which are viewed by patients as high impact
- launch national quality improvement campaigns that unite evidence with clinical practice and that engage nurses and patients as equal partners in quality improvement transformation
- leverage existing nursing research and support the translation of scientific findings into bedside practice
- identify and disseminate nursing-led best practice guidelines to achieve widespread improvements in care.

© The George Washington University
Do not cite, quote, or distribute without permission

9



Proposed Priorities, cont.

DEPARTMENT OF NURSING EDUCATION

Purpose 3: Stimulate reform through shared perspectives, knowledge, and values among nurses and patients, their families, and consumer stakeholders

- respond to policymakers' requests for data, information, and exemplars
- identify a strategic policy roadmap that addresses those issues that affect both patients and nurses and proactively advocate with policy makers for this agenda
- serve as a resource to federal departments on accountability and transparency policy directions
- advocate for the adoption of specific policies that support evidence-based, nursing-led practice among policymakers, lawmakers, and purchasers
- identify nurse- and patient-experts and build capacity to serve in leadership roles (e.g., committees, advisory boards)
- write and deliver testimony, public comments, policy white papers, and other opinion pieces (e.g., editorials) on related issues

© The George Washington University
Do not cite, quote, or distribute without permission

10



Examples of Work Activities

DEPARTMENT OF NURSING EDUCATION

Proposed Purpose	Proposed Priorities	Work Activities/Examples
1. Inspire continued trust and confidence in the nursing profession among patients, their families, and the American public	a. synthesize what is known about nurse-patient relationships and their importance b. articulate nurses' contributions to national quality improvement goals and priorities c. strengthen the visibility of nursing in performance measurement and public reporting activities d. establish an agenda for measure development e. advocate and support the endorsement by a national consensus standards setting organization of nursing-sensitive measures f. disseminate and communicate nursing's contribution to quality	1) Articulate nurses' contributions to the Priority Partnership's Goals/Priorities. Example: <ul style="list-style-type: none"> • NPP Priority: Safety NPP Goal: All healthcare organizations and their staff will strive to ensure a culture of safety while striving to lower the incidence of healthcare-induced harm, disability, or death toward zero. They will focus relentlessly on continually reducing and seeking to eliminate all healthcare-associated infections and serious adverse events. Nursing-specific Goal: By 200X, nurse-led evidence-based models, which have effectively reduced falls with injuries should be widely adopted among 9% of the nation's hospitals, nursing homes, home health agencies, and outpatient settings. A target of 9% overall reduction in falls with injuries by 200X has been established for this purpose. 2) Inventory of existing measures and compare to the nursing-specific goals would be undertaken—a gap analysis would reveal measure development opportunities 3) Existing nursing quality databases (e.g., NDNQI, CaINOC, VAWQD) would assume responsibility for measure development, testing, maintenance

© The George Washington University
Do not cite, quote, or distribute without permission

11



Key Questions

DEPARTMENT OF NURSING EDUCATION

- What general reactions does the group have to the revised mission and purpose statements and priorities?
- What specific suggestions might be made to strengthen these statements and directions?
- What further revisions are necessary to obtain support from the group in moving forward?

© The George Washington University. Do not cite, quote, or distribute without permission

12
